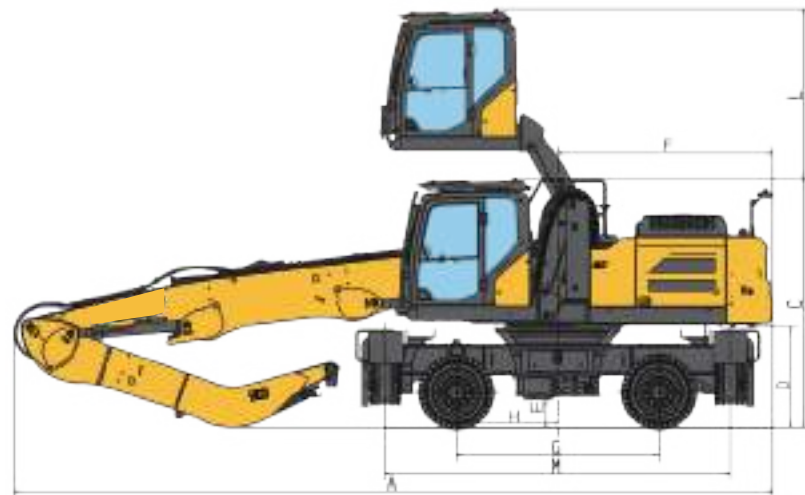


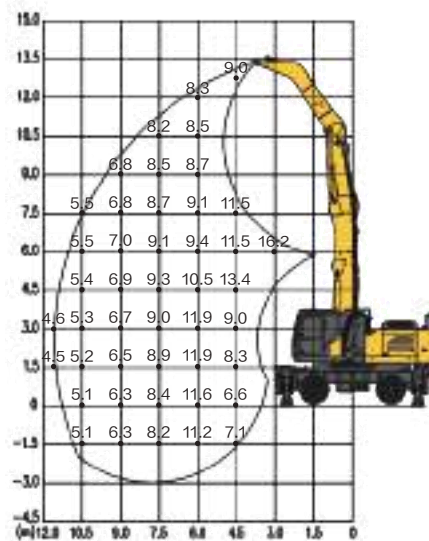
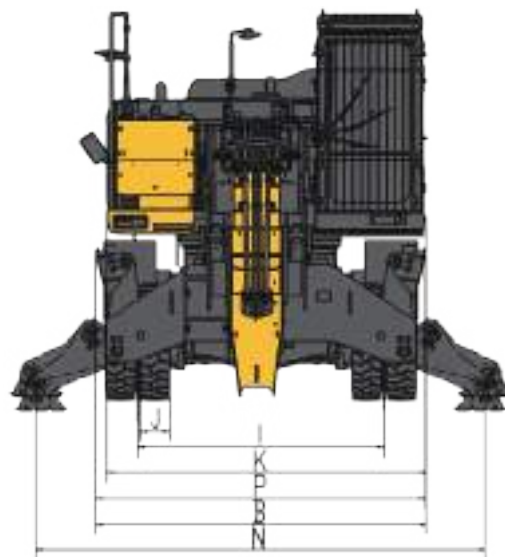
Main parameters



XE350WM



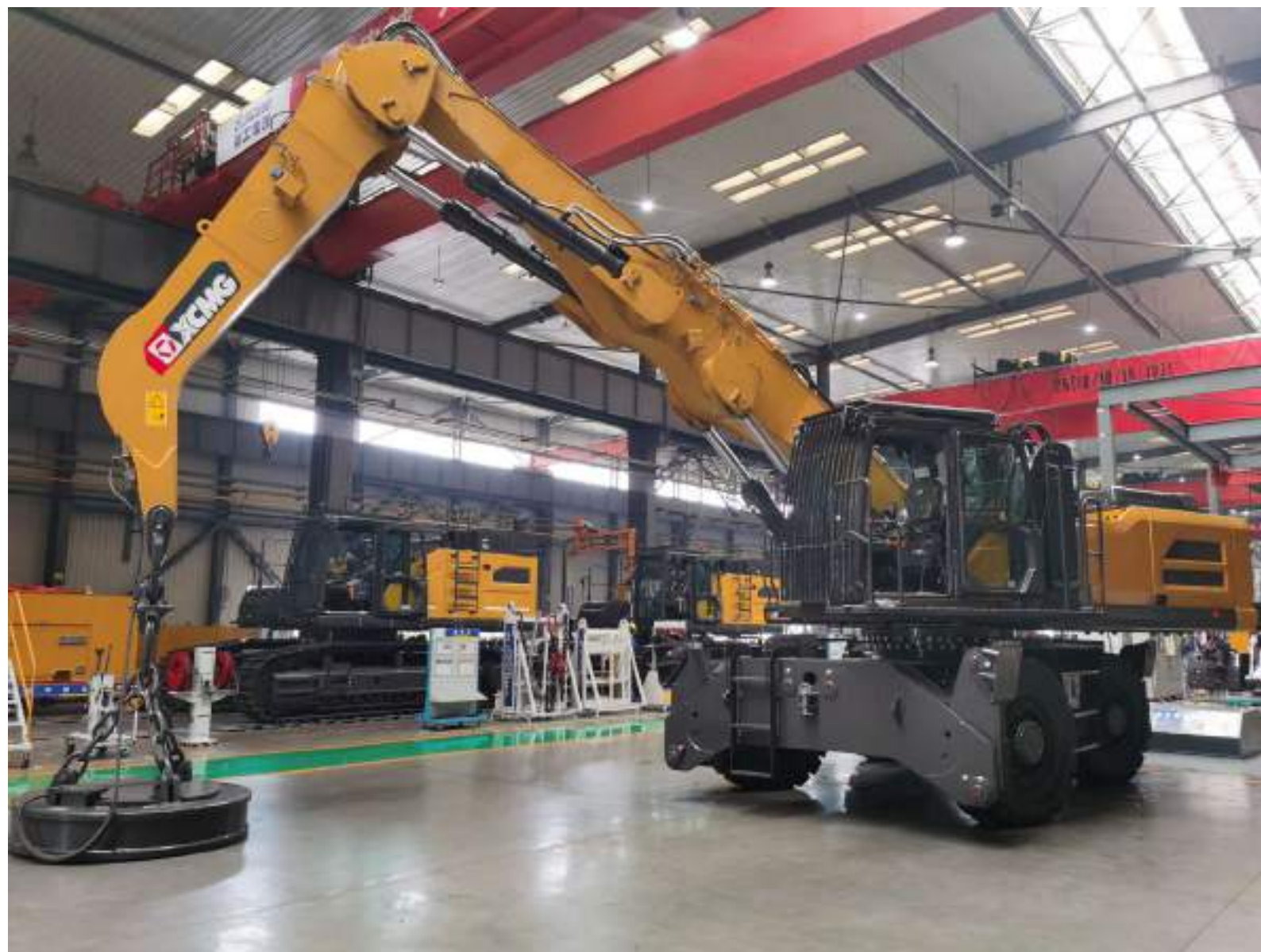
Model	Unit	XE350WM
Operating weight	kg	37500
Engine		
Model	/	B7
Direct injection	/	✓
4 strokes	/	✓
Water-cooled	/	✓
Turbocharged	/	✓
Air-cooled	/	✓
Number of cylinders	/	6
Rated output power/speed	kW/rpm	169/2050
Maximum torque/speed	N-m/rpm	895/1250
Displacement	L	6.7
Main performance		
Travel speed (H/L)	km/h	20/5
Swing speed	r/min	0-10
Gradeability	%	30
Hydraulic system		
Main pump	/	K7V140DTP
Rated flow of main pump	L/min	2 × 259
Relief valve setting pressure	bar	343/370
Travel system pressure	bar	343
Swing system pressure	bar	300
Pilot system pressure	bar	39
Fluid tank capacity		
Fuel tank capacity	L	500
Hydraulic oil tank capacity	L	320
Engine oil capacity	L	30
Appearance measurements		
A Overall length	mm	11220
B Overall width	mm	3160
C Overall height	mm	3700
D Counterweight clearance	mm	1485
E Minimum ground clearance	mm	270
F Minimum tail swing radius	mm	3175
G Wheelbase	mm	3000
H The distance from front axle to the rotary center	mm	1500
I Wheel gauge	mm	2355
J Tire width	mm	285
K Width of super structure	mm	3050
L Maximum cab elevating height	mm	2500
M Longitudinal distance between outriggers	mm	5100
N Lateral distance between outriggers	mm	4300
P Overall width of undercarriage	mm	3150
Working range(pivot point of arm)		
Maximum working height	mm	13400
Maximum working radius	mm	11550
Maximum working depth	mm	2980
Standard		
Boom length	mm	7700
Arm length	mm	4500
Orange peel grab capacity	m ³	0.8



Construction Equipment & Engineering

Call 1800CRANES

XCMG Material Handler XE350WM



1800CRANES
(08) 9459 6212

www.ronco.com.au
xcmg@ronco.com.au

Power system



- Customized low-speed high-torque power system with excellent startup performance and economic fuel consumption;
- Sufficient power reserve for heavy-duty working conditions;
- 18% increase in rated power, 13% increase in peak torque.



Cooling system



- The fully parallel cooling system increases the windward side by 10%, increases the fan diameter by 6%, and reduces the system oil temperature by 5°C.



Undercarriage



- Lengthened and widened variable cross-section box-type frame structure for stronger load-bearing capacity, ensuring more stable and safer whole machine operation;
- Excellent matching technology for axles and gearboxes, providing stronger driving and braking force;
- Internationally renowned travel motors and gearbox system for outstanding driving force;
- Option for two-wheel or four-wheel steering (front wheel, rear wheel, four-wheel, crab-style) can meet the requirements of narrow spaces;
- Option for single or dual tires configuration can meet different driving and transportation demands;
- Lengthened and widened variable cross-section box-type frame structure for stronger load-bearing capacity, ensuring more stable and safer whole machine operation;



Hydraulic system



- High-quality and reliable Kawasaki main pump with sufficient flow rate and high speed; large-diameter main valve for efficient flow distribution and smooth compound actions; high-torque swing motor for quick startup and good parking performance;
- Positive flow distribution pump independent control system for on-demand oil supply can reduce mid-position return flow loss and lower system pressure loss. It has Smooth compound actions and precise micro-control operation;
- High-torque dual-output gearbox, power shift, large-displacement travel motors can provide strong driving force.



Cab



- High-strength integrated stamped cab with good impact, bending, and torsional resistance can effectively protect the operator's safety;
- 10% increase in glass area for better transparency and wider vision;
- Car-grade interior with larger internal space, standard sun visor and more reasonable air outlet for air conditioning provide a comfortable working environment;
- Armrest box handle is installed on the seat slide rail, moving together with the seat for more comfortable operations.

