

TIDD

CRANE ///



TIDD PC28-2

TRT
MADE
POSSIBLE



TIDD PC28-2 is the better experience for capability, safety, comfort, and value.

The TIDD PC28-2 is the better pick and carry crane experience. Constructed using the highest quality components, prioritising safety and performance throughout its design, the TIDD PC28-2 is the right crane for a wide range of operating environments with many class-leading features:

- **European standard automotive finish**
- **Outstanding turning radius**
- **Smooth Operator Control**

Full Power Boom

With the 18.65m full power boom, a 75% stationary chart for the heavy lifts and 66% pick and carry chart, the TIDD PC28-2 packs a massive punch. Made from high tensile steel, telescope sections 1 and 2 are fully synchronised and provide hook compensation. Telescope sections 3 and 4 are independently operated with their own hydraulic cylinder.

Huge Lift Capability

With a 28-tonne maximum lift on the lug and 27.6 on the hook block, The TIDD PC28-2 delivers outstanding lifting capacities for improved efficiency and greater lift options, setting a new benchmark in the industry. Moving from the stationary chart to the pick and carry chart is as simple as turning off the hold brake. You can now lift more and move more safely without compromise!

With its new powerful front suspension cylinders, the TIDD PC28-2 delivers up to 17% more capacity when articulated or working on a side slope. The optional 1.1t Superlift counterweight will increase your lift capacity.

Focused on Safety

Designed to maximise operation safety, the TIDD PC28-2 will minimise risk on the work site and on the road. Safety features include Dynamic LMI with a deadlock switch inside the cabin and an LMI bridging switch outside the cabin. Slew Safe® is a critical safety component that is included with all TIDD PC28-2 cranes!

The innovative safety features of the TIDD Crane, including LMI bridging switch as standard, enables the TIDD PC28-2 to legitimately operate under EN13000 standards. This also means that the TIDD PC28-2 is the only pick and carry crane in its class with a 75% stationary lift chart.

Superior Roadability

Get from site to site with ease with a maximum speed of 80km per hour (speed limited) with reduced ambient noise. It has full ABS braking for improved safety, whether the crane is operating while stationary or at speed.

It is driven by a Mercedes Benz engine and ZF Transmission. With its superior suspension, the TIDD PC28-2 is 12 tonne per axle on the road including its 2.3 tonne removable counterweight. No IAP and no permits in NSW.

“We’ve been impressed with the performance of the TIDD. Its roadability is excellent, and it is a very comfortable drive. We’ve also been impressed with the crane’s compact nature.”

Chris Kolodziej, Managing Director of Cranes Combined

The Ultimate in Comfort

From the ergonomically designed forward mounted ROPS cabin, with two-door configuration and ducted air conditioning, to the 150kg rated air suspension seats and 3-point safety belts, this crane is designed for comfort over long hours, helping to reduce operator fatigue!

Manufactured for the Industry

TRT have been designing and manufacturing heavy equipment, cranes and trailers for over 55 years. With real expertise in crane design and manufacture, TRT is the home of the TIDD Crane.

Many of the TIDD PC28-2 features are designed based on industry and operator feedback, improving safety, lift control and capability, and by drawing on technology and knowledge from our renowned manufacturing ability and experienced team. TRT’s manufacturing operation is ISO9001-2015 accredited.

Service and Support 24/7

Upgrading your fleet to include TIDD PC28-2 is made simple and efficient for all operators and owners. We service and spare parts support, warehouse facilities and our network of experienced dealers throughout Australia and New Zealand. We are committed to support your operation and uptime, 24/7.

Operator Familiarisation

TRT has developed an exclusive and comprehensive operator familiarisation programme for trainer operators. The programme is designed to suit your schedule and location. Your team is supported with experienced TIDD Crane experts 24/7 with our new comprehensive video and is included with your TIDD Crane*.

*Conditions apply



Counterweight

2.3 tonne roadable counterweight. Optional Superlift counterweight available.



Emergency Stop Buttons

- Inside cabin
 - Either side of the crush zone in articulation area.
- LMI override key is located outside behind the cabin.



Articulation

Articulating 44° either side of centre for improved maneuverability, the best in its class!



ROPS Cabin

ROPS, 2-person cabin, seats have integrated seatbelts. Double door access. Optional FOPs for optimal protection.



Engine

Mercedes Benz OM906 six-cylinder, diesel engine.



Carry Deck

1 tonne capacity carry deck with restraint points.



Visibility

Mirrors are placed for optimised visibility and additional cameras are available for increased safety.



Dynamic LMI

Automatically reduces the lift chart for side slope.



Boom

6.12-18.65m high tensile full power boom with 4 telescope sections.



27.6 tonne capacity on running rope.

25 tonne capacity.

28 tonne capacity on fixed lug (stationary)

PC28-2 FEATURES

DIMENSIONS



CAPACITY

28 tonne capacity on fixed lug
27.6 tonne capacity on running rope

BOOM

6.12-18.65m high tensile steel
4 section full power boom

ARTICULATION

44° either side of the centre

SPEED

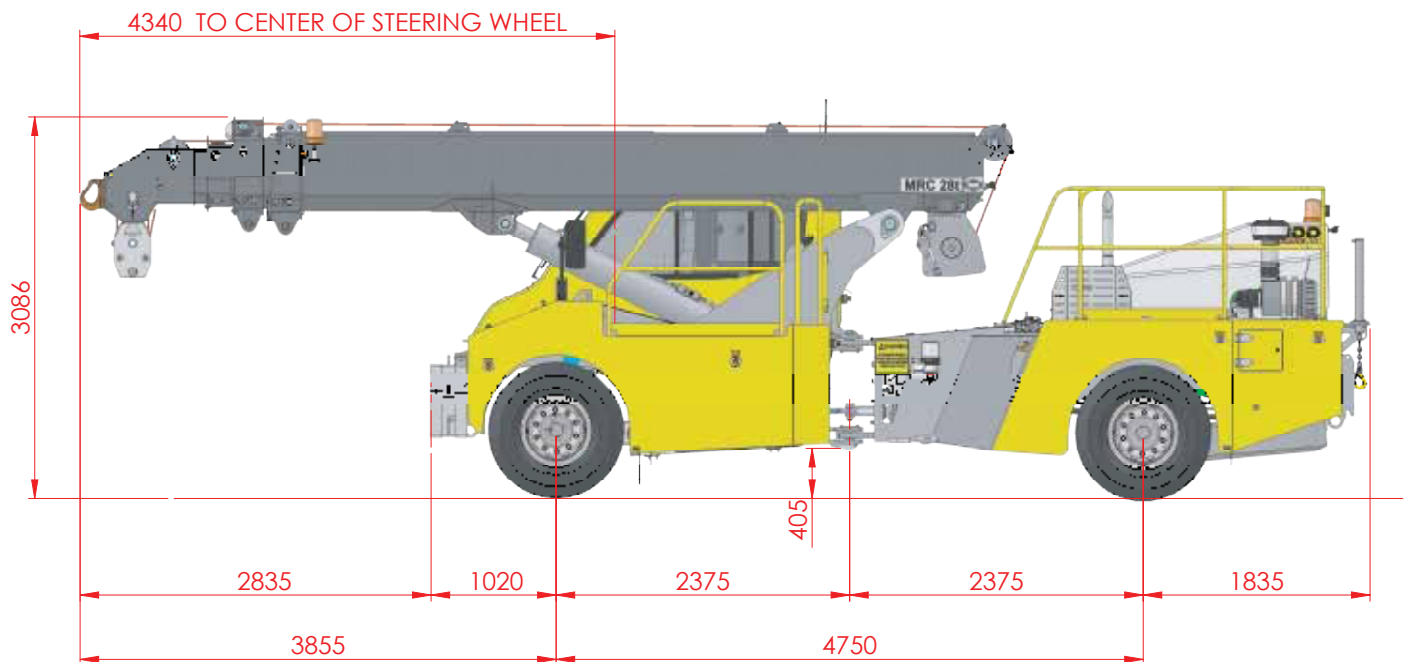
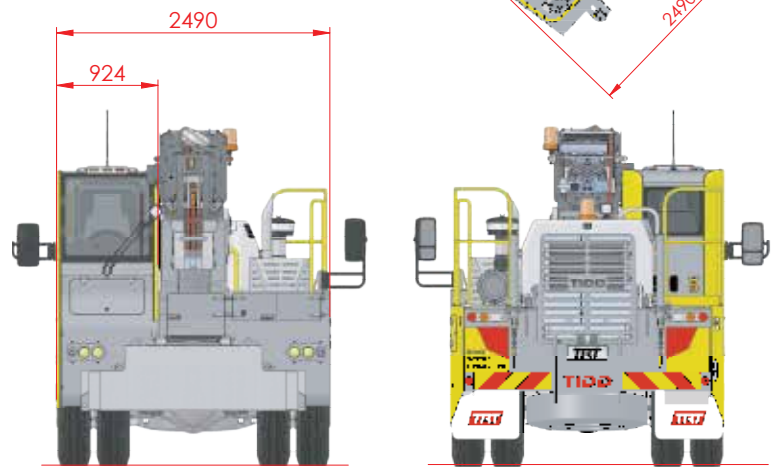
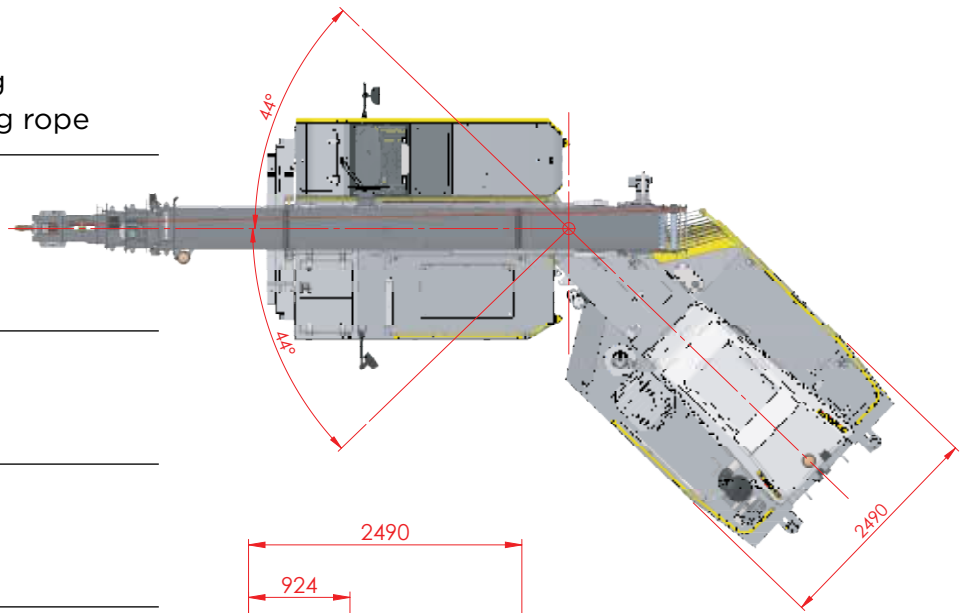
Max 80km/hr

MASS

Gross vehicle mass 23.9 tonne
Front axle mass 11.9 tonne
Rear axle mass 12 tonne

COUNTERWEIGHT

2.3 tonne roadable, front and rear mount



"The crane boasts an impressive load chart in a small package allowing us to go where other cranes cannot. The safety features and road-friendly suspension make this crane a favourite with our operators and our customers."

Mark Kuhn, Managing Director - Max Cranes

SPECIFICATIONS



The TIDD PC28-2 is built with specialist features for construction and mining. There are a wide range of options available to tailor the crane to your operation. If the options you require are not listed below, please contact one of our experts.

| CRANE | DRIVELINE | OPERATOR | |
|--|--|---|---|
| Double acting hydraulic cylinders (-6 to + 65°) with integral holding valve, allowing rigging to drop straight into the front chain box from the hook. | Mercedes Benz OM906 six-cylinder, 6.4 litre, turbo charged, intercooled 205 kW diesel engine. | Forward mounted cabin provides excellent vision. | Safety glass throughout. |
| Anti-two block device. | Allison 3000 series automatic transmission, 6 speeds forward. | ROPS, 2-person cabin with double door access. | 1.5 kg fire extinguisher. |
| Robway RCI8510 Dynamic Load Indicator with automatic cutouts and digital display. | Kessler high-speed planetary axles with diff lock on front axle. | 2 x 150 kg rated air suspension seats with 3-point seat belts. | Mirrors - placement for optimised visibility. |
| A dash mounted deadlock switch allowing a temporary increase to 110% RC only with reduced function speeds. | ZF transfer case. | Large dry storage area via the hinged cabin steps, ideal for storing soft slings. | Reversing camera and alarm. |
| A key locked bridging switch is mounted externally on the cab limiting access to authorised persons. | Two stage engine and exhaust brake. | Hand rails and access steps all have 3 points of contact at all times. | Air conditioning. |
| Joystick control of boom and winch functions with 2-speed winch button, boom-telescoping switch proportionally controlled, and boom luffing with dead man trigger on grip. | 410 litre fuel tank with locking cap. | | Bluetooth, Radio and USB Port. |
| 15 tonne capacity Rhino hook. | Automatically activated emergency hydraulic steering. | | |
| 4.6 tonne line pull Braden PD15 2-speed winch with automatic disc brakes and third wrap indicator. | Dual line full air brakes on all wheels with ABS. | | |
| 14mm non-rotating wire rope x 6 falls. | Pneumatically released spring applied emergency / park brake on all wheels. | | |
| 15 tonne capacity spreader bar. | Holding brake for front right wheel to allow slewing during stationary lifting. | | |
| Large 2-sectioned chain box at the front of the crane and accessed directly from the hook. | Auto grease system. | | |
| 1 tonne capacity carry deck with restraint points. | TIDD hydro-pneumatic suspension on the front axle with hydraulic lockout for crane mode and automatic height adjustment for road mode. | | |
| Two work lights on the boom and one rotating beacon on the boom and engine cover. | Heavy duty parabolic spring suspension on rear. | | |
| Three emergencies stop buttons, in cabin and either side of the crush zone in the articulation area. | High quality load sensing piston pump for hydraulic system, 305 litre hydraulic tank with filtration byway of pressure and return line filtration. | | |
| Tri light safe load indicator on cabin roof with audible alarm. | Battery isolator, external jump start terminals and starter isolator as standard. | | |
| CraneSafe inspection. | LED 24V lighting system | | |
| 1 year warranty standard. | Right side rear handrail for safe servicing of the engine area. | | |

| OPTIONS | |
|-----------------------------------|---|
| Crane | 1.1 tonne Superlift Counterweight |
| | Traction Air CTI Tyre Pressure Control System. Exclusive to TIDD Crane. Front and rear axles. |
| | Rear handrail - left hand side |
| | 25° offset attachment for Rhino |
| | Winch Camera |
| | 1.9m offset Fly Jib 0°, 20° and 40° offsets |
| | Spare tyre and wheel |
| | Spare wheel winch assembly for carrying under rear chassis |
| | Loose wheel nut indicators supplied and installed |
| | Custom paint to match your fleet (2 solid colours). |
| | Man Basket - Supply Only |
| | 9.2t capacity single sheave hook block |
| | 30t Hook |
| Operator | Refrigerated compartment under dogman seat |
| | Seat covers for operator & dogman |
| | 9 kg fire extinguisher mounted front chassis left side |
| | FOPS (Certified Cab Fall Protection System) |
| | UHF radio supplied and installed |
| | First aid kit |
| | Overhead electrical safety warning system |
| Fogmaster fire suppression system | |
| Driveline | Engine fan belt guard assembly |
| | Magnetic drain plug for hydraulic oil tank |

This options list is not exhaustive. There are a range of other options available for the TIDD PC28-2. If you do not see an option specified on the list above, please contact the manufacturer for a full list of options available.

SLEW SAFE®

INCLUDED IN YOUR TIDD PC28-2



Slew Safe delivers peace of mind for drivers, dogman, crane owners and site owners, with improved safety, risk management and duty of care.

Slew Safe simply and effectively allows the TIDD PC28-2 and PC25 operator to pick and carry a load knowing that they will be warned and restricted. No other pick and carry crane is this safe.

HOW SLEW SAFE WORKS:

When the crane in operation moves from green and amber to **RED**, this is an overload notification (based on the lifting chart). This will activate the Slew Safe.

When the crane is operated in the GREEN and AMBER areas of the lifting chart, Slew Safe will remain inactive.

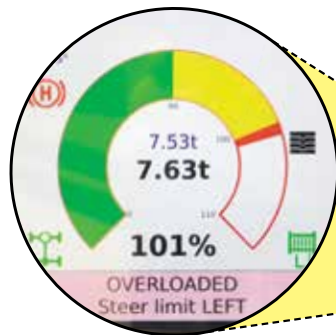
ACTIVATION OF SLEW SAFE WILL:

- Reduce speed of the steering to 15% in the unsafe direction
- Makes steering harder with instant feedback through the steering wheel to operator
- The engine will “load up” making an audible sound change for operator
- Constant audible alarm inside and outside cabin to warn operator and dogman of overload

Retains ability to move back to the safe direction for normal operation in GREEN.



Watch the Slew Safe demonstration << video



Australian Innovation Patent No. 2019100317

“The safety focus of the crane in the way in which it mitigates risks to stakeholders and protects staff was a significant factor that influenced our decision... I believe the TIDD Crane is becoming extensively talked about and more popular due to the safety innovations” **Rosario Giammona (Ross), Director of Vamp Cranes**

“It is safety features such as Slew Safe and additional load charts for static lifts and the other safety features which put the TIDD out in front in the pick and carry race at the moment” **Michael Yates, CREW NSW, Director**

SUPERLIFT COUNTERWEIGHT

+12% CAPACITY

The Superlift counterweight allows you to lift up to 12% heavier loads in both pick & carry and on stationary charts.

When fitted to the base of the 2.3t roadable counterweight, the optional 1.1t Superlift Counterweight simply and effectively increases the capacity of the crane.

- 1.1t allows transport to, site under 3.5t with car licence
- Operator-friendly loading system using the crane
- Proximity sensor, auto-sensing for safety
- Fast and easy to set up
- Simple to use

For further information and lift charts please refer to pages 10-11 for both Pick and Carry and Stationary charts. Other lift charts are available on request.



“The crane features are perfect for the operating conditions. The TIDD PC28-2 is narrow, tight, and ideal for confined areas but still has the lifting capacity we need” **Ian Rowan, Director of QME Engineering**



TYRE PRESSURE MANAGEMENT

Traction Air® manages tyre pressure to the standard 130psi on all 4 front and rear tyres, creating a stable lift platform and improving crane safety.

- Incorrect tyre pressure, over inflation or punctured tyres can put operators at risk.
- **Constant tyre pressure monitoring** with Traction Air allows operators to lift safely, and correctly every time. From a simple to use touch screen in the cab, instant leak and puncture alarms notify the operator of a change, reducing risk of serious incidents.
- **Improve safety and operator confidence.** There is no need for manual tyre pressure checks on start- up increasing valuable up time. No matter the surface temperature, even on bitumen, tyres on TIDD PC28-2 will remain at 130psi.
- Based on more than 25 years of product innovation and exclusive to TIDD PC28-2, Traction Air has a **3 year /500,000km warranty***.



LOAD CHART 66%

PICK & CARRY



| | 6.12 | 7.00 | 8.00 | 9.00 | 10.00 | 11.00 | 12.00 | 13.00 | 14.45 | 15.00 | 16.00 | 17.00 | 18.00 | 18.64 |
|------|-------|-------|-------|-------|-------|-------|-------|-------|-------|-------|-------|-------|-------|-------|
| 1 | 25000 | 25000 | 25000 | | | | | | | | | | | |
| | 23000 | 23000 | 23000 | | | | | | | | | | | |
| | 20500 | 20500 | 20500 | | | | | | | | | | | |
| | 17500 | 17500 | 17500 | | | | | | | | | | | |
| 2 | 20500 | 20500 | 20500 | 20500 | 20500 | | | | | | | | | |
| | 18860 | 18860 | 18860 | 18860 | 18860 | | | | | | | | | |
| | 16810 | 16810 | 16810 | 16810 | 16810 | | | | | | | | | |
| | 14350 | 14350 | 14350 | 14350 | 14350 | | | | | | | | | |
| 3 | 16600 | 16400 | 16400 | 16400 | 16400 | 16400 | 16000 | 15800 | | | | | | |
| | 15270 | 15090 | 15090 | 15090 | 15090 | 15090 | 14720 | 14540 | | | | | | |
| | 13610 | 13450 | 13450 | 13450 | 13450 | 13450 | 13120 | 12960 | | | | | | |
| | 11620 | 11480 | 11480 | 11480 | 11480 | 11480 | 11200 | 11060 | | | | | | |
| 4 | | 12050 | 11800 | 11800 | 11800 | 11800 | 11700 | 11500 | 11400 | 11400 | | | | |
| | | 11090 | 10860 | 10860 | 10860 | 10860 | 10760 | 10580 | 10490 | 10490 | | | | |
| | | 9880 | 9680 | 9680 | 9680 | 9680 | 9590 | 9430 | 9350 | 9350 | | | | |
| | | 8440 | 8260 | 8260 | 8260 | 8260 | 8190 | 8050 | 7980 | 7980 | | | | |
| 5 | | | 9500 | 9500 | 9450 | 9400 | 9350 | 9350 | 9300 | 9350 | 9400 | 9400 | | |
| | | | 8740 | 8740 | 8690 | 8650 | 8600 | 8600 | 8560 | 8600 | 8650 | 8650 | | |
| | | | 7790 | 7790 | 7750 | 7710 | 7670 | 7670 | 7630 | 7670 | 7710 | 7710 | | |
| | | | 6650 | 6650 | 6620 | 6580 | 6550 | 6550 | 6510 | 6550 | 6580 | 6580 | | |
| 6 | | | | 7700 | 7700 | 7700 | 7700 | 7650 | 7600 | 7600 | 7600 | 7700 | 7800 | 7800 |
| | | | | 7080 | 7080 | 7080 | 7080 | 7040 | 6990 | 6990 | 6990 | 7080 | 7180 | 7180 |
| | | | | 6310 | 6310 | 6310 | 6310 | 6270 | 6230 | 6230 | 6230 | 6310 | 6400 | 6400 |
| | | | | 5390 | 5390 | 5390 | 5390 | 5360 | 5320 | 5320 | 5320 | 5390 | 5460 | 5460 |
| 7 | | | | | 6400 | 6400 | 6400 | 6300 | 6200 | 6250 | 6300 | 6300 | 6400 | 6500 |
| | | | | | 5890 | 5890 | 5890 | 5800 | 5700 | 5750 | 5800 | 5800 | 5890 | 5980 |
| | | | | | 5250 | 5250 | 5250 | 5170 | 5080 | 5130 | 5170 | 5170 | 5250 | 5330 |
| | | | | | 4480 | 4480 | 4480 | 4410 | 4340 | 4380 | 4410 | 4410 | 4480 | 4550 |
| 8 | | | | | | 5100 | 5100 | 5100 | 5100 | 5150 | 5200 | 5200 | 5250 | 5350 |
| | | | | | | 4690 | 4690 | 4690 | 4690 | 4740 | 4780 | 4780 | 4830 | 4920 |
| | | | | | | 4180 | 4180 | 4180 | 4180 | 4220 | 4260 | 4260 | 4310 | 4390 |
| | | | | | | 3570 | 3570 | 3570 | 3570 | 3610 | 3640 | 3640 | 3680 | 3750 |
| 9 | | | | | | | 4450 | 4450 | 4450 | 4400 | 4450 | 4450 | 4500 | 4550 |
| | | | | | | | 4090 | 4090 | 4090 | 4050 | 4090 | 4090 | 4140 | 4190 |
| | | | | | | | 3650 | 3650 | 3650 | 3610 | 3650 | 3650 | 3690 | 3730 |
| | | | | | | | 3120 | 3120 | 3120 | 3080 | 3120 | 3120 | 3150 | 3190 |
| 10 | | | | | | | | 3800 | 3800 | 3800 | 3850 | 3900 | 3950 | 4000 |
| | | | | | | | | 3500 | 3500 | 3500 | 3540 | 3590 | 3630 | 3680 |
| | | | | | | | | 3120 | 3120 | 3120 | 3160 | 3200 | 3240 | 3280 |
| | | | | | | | | 2660 | 2660 | 2660 | 2700 | 2730 | 2770 | 2800 |
| 11 | | | | | | | | | 3400 | 3400 | 3450 | 3450 | 3500 | 3500 |
| | | | | | | | | | 3130 | 3130 | 3170 | 3170 | 3220 | 3220 |
| | | | | | | | | | 2790 | 2790 | 2830 | 2830 | 2870 | 2870 |
| | | | | | | | | | 2380 | 2380 | 2420 | 2420 | 2450 | 2450 |
| 12 | | | | | | | | | | 3200 | 3200 | 3200 | 3200 | 3250 |
| | | | | | | | | | | 2940 | 2940 | 2940 | 2940 | 2990 |
| | | | | | | | | | | 2620 | 2620 | 2620 | 2620 | 2670 |
| | | | | | | | | | | 2240 | 2240 | 2240 | 2240 | 2280 |
| 13 | | | | | | | | | | | 2800 | 2800 | 2850 | 2900 |
| | | | | | | | | | | | 2580 | 2580 | 2620 | 2670 |
| | | | | | | | | | | | 2300 | 2300 | 2340 | 2380 |
| | | | | | | | | | | | 1960 | 1960 | 2000 | 2030 |
| 14 | | | | | | | | | | | | 2550 | 2550 | 2600 |
| | | | | | | | | | | | | 2350 | 2350 | 2390 |
| | | | | | | | | | | | | 2090 | 2090 | 2130 |
| | | | | | | | | | | | | 1790 | 1790 | 1820 |
| 15 | | | | | | | | | | | | | 2300 | 2350 |
| | | | | | | | | | | | | | 2120 | 2160 |
| | | | | | | | | | | | | | 1890 | 1930 |
| | | | | | | | | | | | | | 1610 | 1650 |
| 15.9 | | | | | | | | | | | | | | 2150 |
| | | | | | | | | | | | | | | 1980 |
| | | | | | | | | | | | | | | 1760 |
| | | | | | | | | | | | | | | 1510 |

| |
|--|
| Rated Capacity (kg) for 0°-10° articulation |
| Rated Capacity (kg) for 11°-20° articulation |
| Rated Capacity (kg) for 21°-30° articulation |
| Rated Capacity (kg) for 31°-44° articulation |

LOAD CHART 75%

STATIONARY



| | 6.12 | 7.00 | 8.00 | 9.00 | 10.00 | 11.00 | 12.00 | 13.00 | 14.45 | 15.00 | 16.00 | 17.00 | 18.00 | 18.64 |
|------|-------|-------|-------|-------|-------|-------|-------|-------|-------|-------|-------|-------|-------|-------|
| 1 | 27600 | 25000 | 25000 | | | | | | | | | | | |
| | 25390 | 23000 | 23000 | | | | | | | | | | | |
| | 22630 | 20500 | 20500 | | | | | | | | | | | |
| | 19320 | 17500 | 17500 | | | | | | | | | | | |
| 2 | 22400 | 22400 | 22400 | 22400 | 22400 | | | | | | | | | |
| | 20610 | 20610 | 20610 | 20610 | 20610 | | | | | | | | | |
| | 18370 | 18370 | 18370 | 18370 | 18370 | | | | | | | | | |
| | 15680 | 15680 | 15680 | 15680 | 15680 | | | | | | | | | |
| 3 | 18680 | 18450 | 18450 | 18450 | 18450 | 18450 | 18000 | 17780 | | | | | | |
| | 17190 | 16970 | 16970 | 16970 | 16970 | 16970 | 16560 | 16360 | | | | | | |
| | 15320 | 15130 | 15130 | 15130 | 15130 | 15130 | 14760 | 14580 | | | | | | |
| | 13080 | 12920 | 12920 | 12920 | 12920 | 12920 | 12600 | 12450 | | | | | | |
| 4 | | 13560 | 13280 | 13280 | 13280 | 13280 | 13160 | 12940 | 12830 | 12830 | | | | |
| | | 12480 | 12220 | 12220 | 12220 | 12220 | 12110 | 11900 | 11800 | 11800 | | | | |
| | | 11120 | 10890 | 10890 | 10890 | 10890 | 10790 | 10610 | 10520 | 10520 | | | | |
| | | 9490 | 9300 | 9300 | 9300 | 9300 | 9210 | 9060 | 8980 | 8980 | | | | |
| 5 | | | 10690 | 10690 | 10630 | 10580 | 10520 | 10520 | 10460 | 10520 | 10580 | 10580 | | |
| | | | 9830 | 9830 | 9780 | 9730 | 9680 | 9680 | 9620 | 9680 | 9730 | 9730 | | |
| | | | 8770 | 8770 | 8720 | 8680 | 8630 | 8630 | 8580 | 8630 | 8680 | 8680 | | |
| | | | 7480 | 7480 | 7440 | 7410 | 7360 | 7360 | 7320 | 7360 | 7410 | 7410 | | |
| 6 | | | | 8660 | 8660 | 8660 | 8660 | 8610 | 8550 | 8550 | 8550 | 8660 | 8780 | 8780 |
| | | | | 7970 | 7970 | 7970 | 7970 | 7920 | 7870 | 7870 | 7870 | 7970 | 8080 | 8080 |
| | | | | 7100 | 7100 | 7100 | 7100 | 7060 | 7010 | 7010 | 7010 | 7100 | 7200 | 7200 |
| | | | | 6060 | 6060 | 6060 | 6060 | 6030 | 5990 | 5990 | 5990 | 6060 | 6150 | 6150 |
| 7 | | | | | 7200 | 7200 | 7200 | 7090 | 6980 | 7030 | 7090 | 7090 | 7200 | 7310 |
| | | | | | 6620 | 6620 | 6620 | 6520 | 6420 | 6470 | 6520 | 6520 | 6620 | 6730 |
| | | | | | 5900 | 5900 | 5900 | 5810 | 5720 | 5760 | 5810 | 5810 | 5900 | 5990 |
| | | | | | 5040 | 5040 | 5040 | 4960 | 4890 | 4920 | 4960 | 4960 | 5040 | 5120 |
| 8 | | | | | | 5740 | 5740 | 5740 | 5740 | 5790 | 5850 | 5850 | 5910 | 6020 |
| | | | | | | 5280 | 5280 | 5280 | 5280 | 5330 | 5380 | 5380 | 5440 | 5540 |
| | | | | | | 4710 | 4710 | 4710 | 4710 | 4750 | 4800 | 4800 | 4850 | 4940 |
| | | | | | | 4020 | 4020 | 4020 | 4020 | 4050 | 4100 | 4100 | 4140 | 4210 |
| 9 | | | | | | | 5010 | 5010 | 5010 | 4950 | 5010 | 5010 | 5060 | 5120 |
| | | | | | | | 4610 | 4610 | 4610 | 4550 | 4610 | 4610 | 4660 | 4710 |
| | | | | | | | 4110 | 4110 | 4110 | 4060 | 4110 | 4110 | 4150 | 4200 |
| | | | | | | | 3510 | 3510 | 3510 | 3470 | 3510 | 3510 | 3540 | 3580 |
| 10 | | | | | | | | 4280 | 4280 | 4280 | 4330 | 4390 | 4440 | 4500 |
| | | | | | | | | 3940 | 3940 | 3940 | 3980 | 4040 | 4080 | 4140 |
| | | | | | | | | 3510 | 3510 | 3510 | 3550 | 3600 | 3640 | 3690 |
| | | | | | | | | 3000 | 3000 | 3000 | 3030 | 3070 | 3110 | 3150 |
| 11 | | | | | | | | | 3830 | 3830 | 3880 | 3880 | 3940 | 3940 |
| | | | | | | | | | 3520 | 3520 | 3570 | 3570 | 3620 | 3620 |
| | | | | | | | | | 3140 | 3140 | 3180 | 3180 | 3230 | 3230 |
| | | | | | | | | | 2680 | 2680 | 2720 | 2720 | 2760 | 2760 |
| 12 | | | | | | | | | | 3600 | 3600 | 3600 | 3600 | 3660 |
| | | | | | | | | | | 3310 | 3310 | 3310 | 3310 | 3370 |
| | | | | | | | | | | 2950 | 2950 | 2950 | 2950 | 3000 |
| | | | | | | | | | | 2520 | 2520 | 2520 | 2520 | 2560 |
| 13 | | | | | | | | | | | 3150 | 3150 | 3210 | 3260 |
| | | | | | | | | | | | 2900 | 2900 | 2950 | 3000 |
| | | | | | | | | | | | 2580 | 2580 | 2630 | 2670 |
| | | | | | | | | | | | 2210 | 2210 | 2250 | 2280 |
| 14 | | | | | | | | | | | | 2870 | 2870 | 2930 |
| | | | | | | | | | | | | 2640 | 2640 | 2700 |
| | | | | | | | | | | | | 2350 | 2350 | 2400 |
| | | | | | | | | | | | | 2010 | 2010 | 2050 |
| 15 | | | | | | | | | | | | | 2590 | 2640 |
| | | | | | | | | | | | | | 2380 | 2430 |
| | | | | | | | | | | | | | 2120 | 2160 |
| | | | | | | | | | | | | | 1810 | 1850 |
| 15.9 | | | | | | | | | | | | | | 2420 |
| | | | | | | | | | | | | | | 2230 |
| | | | | | | | | | | | | | | 1980 |
| | | | | | | | | | | | | | | 1690 |

| |
|--|
| Rated Capacity (kg) for 0°-10° articulation |
| Rated Capacity (kg) for 11°-20° articulation |
| Rated Capacity (kg) for 21°-30° articulation |
| Rated Capacity (kg) for 31°-44° articulation |

SUPERLIFT LOAD CHART 66%

+12% CAPACITY - PICK & CARRY



| | 6.12 | 7.00 | 8.00 | 9.00 | 10.00 | 11.00 | 12.00 | 13.00 | 14.45 | 15.00 | 16.00 | 17.00 | 18.00 | 18.64 |
|------|-------|-------|-------|-------|-------|-------|-------|-------|-------|-------|-------|-------|-------|-------|
| 1 | 25000 | 25000 | 25000 | | | | | | | | | | | |
| | 23000 | 23000 | 23000 | | | | | | | | | | | |
| | 20500 | 20500 | 20500 | | | | | | | | | | | |
| | 17500 | 17500 | 17500 | | | | | | | | | | | |
| 2 | 20500 | 20500 | 20500 | 20500 | 20500 | | | | | | | | | |
| | 18860 | 18860 | 18860 | 18860 | 18860 | | | | | | | | | |
| | 16810 | 16810 | 16810 | 16810 | 16810 | | | | | | | | | |
| | 14350 | 14350 | 14350 | 14350 | 14350 | | | | | | | | | |
| 3 | 17550 | 17350 | 17350 | 17350 | 17350 | 17350 | 16950 | 16750 | | | | | | |
| | 16150 | 15960 | 15960 | 15960 | 15960 | 15960 | 15590 | 15410 | | | | | | |
| | 14390 | 14230 | 14230 | 14230 | 14230 | 14230 | 13900 | 13740 | | | | | | |
| | 12290 | 12150 | 12150 | 12150 | 12150 | 12150 | 11870 | 11730 | | | | | | |
| 4 | | 13250 | 13000 | 13000 | 13000 | 13000 | 12900 | 12700 | 12600 | 12600 | | | | |
| | | | 12190 | 11960 | 11960 | 11960 | 11960 | 11870 | 11680 | 11590 | 11590 | | | |
| | | | 10870 | 10660 | 10660 | 10660 | 10660 | 10580 | 10410 | 10330 | 10330 | | | |
| | | | 9280 | 9100 | 9100 | 9100 | 9100 | 9030 | 8890 | 8820 | 8820 | | | |
| 5 | | | 10500 | 10500 | 10450 | 10400 | 10350 | 10350 | 10300 | 10300 | 10350 | 10400 | | |
| | | | | 9660 | 9660 | 9610 | 9570 | 9520 | 9520 | 9480 | 9480 | 9520 | 9570 | |
| | | | | 8610 | 8610 | 8570 | 8530 | 8490 | 8490 | 8450 | 8450 | 8490 | 8530 | |
| | | | | 7350 | 7350 | 7320 | 7280 | 7250 | 7250 | 7210 | 7210 | 7250 | 7280 | |
| 6 | | | | 8500 | 8500 | 8500 | 8500 | 8450 | 8400 | 8400 | 8400 | 8400 | 8500 | 8600 |
| | | | | | 7820 | 7820 | 7820 | 7820 | 7770 | 7730 | 7730 | 7730 | 7820 | 7910 |
| | | | | | 6970 | 6970 | 6970 | 6970 | 6930 | 6890 | 6890 | 6890 | 6970 | 7050 |
| | | | | | 5950 | 5950 | 5950 | 5950 | 5920 | 5880 | 5880 | 5880 | 5950 | 6020 |
| 7 | | | | | 7100 | 7100 | 7100 | 7000 | 6900 | 6950 | 7000 | 7000 | 7100 | 7200 |
| | | | | | | 6530 | 6530 | 6530 | 6440 | 6350 | 6390 | 6440 | 6440 | 6530 |
| | | | | | | 5820 | 5820 | 5820 | 5740 | 5660 | 5700 | 5740 | 5740 | 5820 |
| | | | | | | 4970 | 4970 | 4970 | 4900 | 4830 | 4870 | 4900 | 4900 | 4970 |
| 8 | | | | | | 5700 | 5700 | 5700 | 5700 | 5750 | 5800 | 5800 | 5850 | 5900 |
| | | | | | | | 5240 | 5240 | 5240 | 5240 | 5290 | 5340 | 5340 | 5430 |
| | | | | | | | 4670 | 4670 | 4670 | 4670 | 4720 | 4760 | 4760 | 4840 |
| | | | | | | | 3990 | 3990 | 3990 | 3990 | 4030 | 4060 | 4060 | 4130 |
| 9 | | | | | | | 4950 | 4950 | 4950 | 4900 | 4950 | 4950 | 5000 | 5000 |
| | | | | | | | | 4550 | 4550 | 4550 | 4510 | 4550 | 4550 | 4600 |
| | | | | | | | | 4060 | 4060 | 4060 | 4020 | 4060 | 4060 | 4100 |
| | | | | | | | | 3470 | 3470 | 3470 | 3430 | 3470 | 3470 | 3500 |
| 10 | | | | | | | | 4200 | 4200 | 4200 | 4250 | 4300 | 4350 | 4400 |
| | | | | | | | | | 3860 | 3860 | 3860 | 3910 | 3960 | 4000 |
| | | | | | | | | | 3440 | 3440 | 3440 | 3490 | 3530 | 3610 |
| | | | | | | | | | 2940 | 2940 | 2940 | 2980 | 3010 | 3080 |
| 11 | | | | | | | | | 3800 | 3800 | 3850 | 3850 | 3900 | 3900 |
| | | | | | | | | | | 3500 | 3500 | 3540 | 3540 | 3590 |
| | | | | | | | | | | 3120 | 3120 | 3160 | 3160 | 3200 |
| | | | | | | | | | | 2660 | 2660 | 2700 | 2700 | 2730 |
| 12 | | | | | | | | | | | 3500 | 3500 | 3500 | 3550 |
| | | | | | | | | | | | | 3220 | 3220 | 3270 |
| | | | | | | | | | | | | 2870 | 2870 | 2910 |
| | | | | | | | | | | | | 2450 | 2450 | 2490 |
| 13 | | | | | | | | | | | | | 3150 | 3250 |
| | | | | | | | | | | | | | 2900 | 2990 |
| | | | | | | | | | | | | | 2580 | 2670 |
| | | | | | | | | | | | | | 2210 | 2280 |
| 14 | | | | | | | | | | | | | | 2850 |
| | | | | | | | | | | | | | | 2620 |
| | | | | | | | | | | | | | | 2340 |
| | | | | | | | | | | | | | | 2000 |
| 15 | | | | | | | | | | | | | | 2650 |
| | | | | | | | | | | | | | | 2440 |
| | | | | | | | | | | | | | | 2170 |
| | | | | | | | | | | | | | | 1860 |
| 15.9 | | | | | | | | | | | | | | 2450 |
| | | | | | | | | | | | | | | 2250 |
| | | | | | | | | | | | | | | 2010 |
| | | | | | | | | | | | | | | 1720 |

| |
|--|
| Rated Capacity (kg) for 0°-10° articulation |
| Rated Capacity (kg) for 11°-20° articulation |
| Rated Capacity (kg) for 21°-30° articulation |
| Rated Capacity (kg) for 31°-44° articulation |

SUPERLIFT LOAD CHART 75%

+12% CAPACITY - STATIONARY



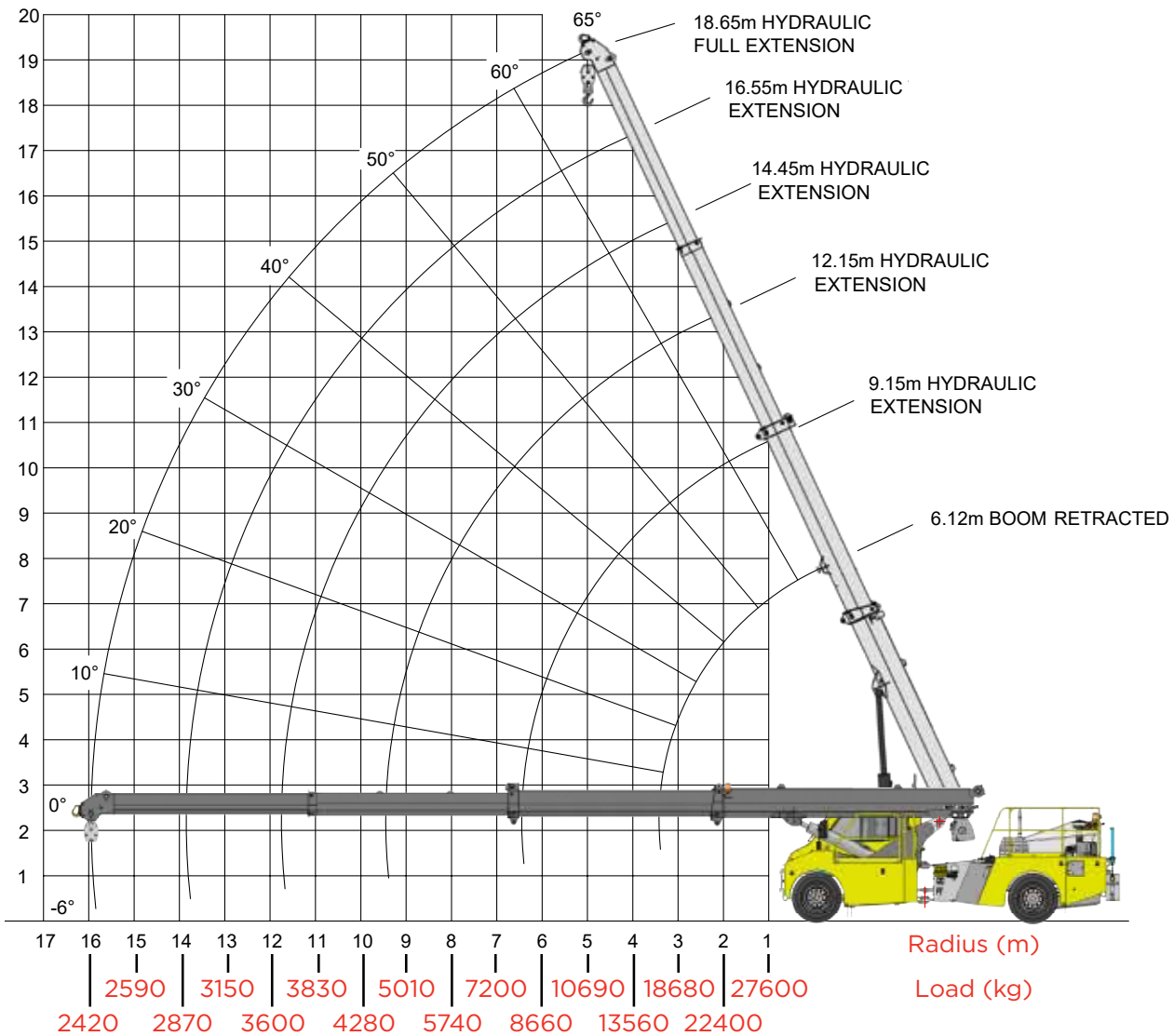
| | 6.12 | 7.00 | 8.00 | 9.00 | 10.00 | 11.00 | 12.00 | 13.00 | 14.45 | 15.00 | 16.00 | 17.00 | 18.00 | 18.64 |
|------|-------|-------|-------|-------|-------|-------|-------|-------|-------|-------|-------|-------|-------|-------|
| 1 | 27600 | 25000 | 25000 | | | | | | | | | | | |
| | 25392 | 23000 | 23000 | | | | | | | | | | | |
| | 22632 | 20500 | 20500 | | | | | | | | | | | |
| | 19320 | 17500 | 17500 | | | | | | | | | | | |
| 2 | 22400 | 22400 | 22400 | 22400 | 22400 | | | | | | | | | |
| | 20608 | 20608 | 20608 | 20608 | 20608 | | | | | | | | | |
| | 18368 | 18368 | 18368 | 18368 | 18368 | | | | | | | | | |
| | 15680 | 15680 | 15680 | 15680 | 15680 | | | | | | | | | |
| 3 | 19744 | 19519 | 19519 | 19519 | 19519 | 19519 | 19069 | 18844 | | | | | | |
| | 18160 | 17960 | 17960 | 17960 | 17960 | 17960 | 17540 | 17340 | | | | | | |
| | 16190 | 16010 | 16010 | 16010 | 16010 | 16010 | 15640 | 15450 | | | | | | |
| | 13821 | 13663 | 13663 | 13663 | 13663 | 13663 | 13348 | 13191 | | | | | | |
| 4 | | 14910 | 14630 | 14630 | 14630 | 14630 | 14510 | 14290 | 14180 | 14180 | | | | |
| | | 13720 | 13460 | 13460 | 13460 | 13460 | 13350 | 13150 | 13050 | 13050 | | | | |
| | | 12230 | 12000 | 12000 | 12000 | 12000 | 11900 | 11720 | 11630 | 11630 | | | | |
| | | 10440 | 10240 | 10240 | 10240 | 10240 | 10160 | 10000 | 9930 | 9930 | | | | |
| 5 | | | 11810 | 11810 | 11760 | 11700 | 11640 | 11640 | 11590 | 11590 | 11640 | 11700 | | |
| | | | 10870 | 10870 | 10820 | 10760 | 10710 | 10710 | 10660 | 10660 | 10710 | 10760 | | |
| | | | 9680 | 9680 | 9640 | 9590 | 9540 | 9540 | 9500 | 9500 | 9540 | 9590 | | |
| | | | 8270 | 8270 | 8230 | 8190 | 8150 | 8150 | 8110 | 8110 | 8150 | 8190 | | |
| 6 | | | | 9560 | 9560 | 9560 | 9560 | 9510 | 9450 | 9450 | 9450 | 9560 | 9680 | 9680 |
| | | | | 8800 | 8800 | 8800 | 8800 | 8750 | 8690 | 8690 | 8690 | 8800 | 8910 | 8910 |
| | | | | 7840 | 7840 | 7840 | 7840 | 7800 | 7750 | 7750 | 7750 | 7840 | 7940 | 7940 |
| | | | | 6690 | 6690 | 6690 | 6690 | 6660 | 6620 | 6620 | 6620 | 6690 | 6780 | 6780 |
| 7 | | | | | 7990 | 7990 | 7990 | 7880 | 7760 | 7820 | 7880 | 7880 | 7990 | 8100 |
| | | | | | 7350 | 7350 | 7350 | 7250 | 7140 | 7190 | 7250 | 7250 | 7350 | 7450 |
| | | | | | 6550 | 6550 | 6550 | 6460 | 6360 | 6410 | 6460 | 6460 | 6550 | 6640 |
| | | | | | 5590 | 5590 | 5590 | 5520 | 5430 | 5470 | 5520 | 5520 | 5590 | 5670 |
| 8 | | | | | | 6410 | 6410 | 6410 | 6410 | 6470 | 6530 | 6530 | 6580 | 6640 |
| | | | | | | 5900 | 5900 | 5900 | 5900 | 5950 | 6010 | 6010 | 6050 | 6110 |
| | | | | | | 5260 | 5260 | 5260 | 5260 | 5310 | 5350 | 5350 | 5400 | 5440 |
| | | | | | | 4490 | 4490 | 4490 | 4490 | 4530 | 4570 | 4570 | 4610 | 4650 |
| 9 | | | | | | | 5570 | 5570 | 5570 | 5510 | 5570 | 5570 | 5630 | 5630 |
| | | | | | | | 5120 | 5120 | 5120 | 5070 | 5120 | 5120 | 5180 | 5180 |
| | | | | | | | 4570 | 4570 | 4570 | 4520 | 4570 | 4570 | 4620 | 4620 |
| | | | | | | | 3900 | 3900 | 3900 | 3860 | 3900 | 3900 | 3940 | 3940 |
| 10 | | | | | | | | 4730 | 4730 | 4730 | 4780 | 4840 | 4890 | 4950 |
| | | | | | | | | 4350 | 4350 | 4350 | 4400 | 4450 | 4500 | 4550 |
| | | | | | | | | 3880 | 3880 | 3880 | 3920 | 3970 | 4010 | 4060 |
| | | | | | | | | 3310 | 3310 | 3310 | 3350 | 3390 | 3420 | 3470 |
| 11 | | | | | | | | | 4280 | 4280 | 4330 | 4330 | 4390 | 4390 |
| | | | | | | | | | 3940 | 3940 | 3980 | 3980 | 4040 | 4040 |
| | | | | | | | | | 3510 | 3510 | 3550 | 3550 | 3600 | 3600 |
| | | | | | | | | | 3000 | 3000 | 3030 | 3030 | 3070 | 3070 |
| 12 | | | | | | | | | | 3940 | 3940 | 3940 | 3940 | 3990 |
| | | | | | | | | | | 3620 | 3620 | 3620 | 3620 | 3670 |
| | | | | | | | | | | 3230 | 3230 | 3230 | 3230 | 3270 |
| | | | | | | | | | | 2760 | 2760 | 2760 | 2760 | 2790 |
| 13 | | | | | | | | | | | 3540 | 3540 | 3600 | 3660 |
| | | | | | | | | | | | 3260 | 3260 | 3310 | 3370 |
| | | | | | | | | | | | 2900 | 2900 | 2950 | 3000 |
| | | | | | | | | | | | 2480 | 2480 | 2520 | 2560 |
| 14 | | | | | | | | | | | | 3210 | 3210 | 3260 |
| | | | | | | | | | | | | 2950 | 2950 | 3000 |
| | | | | | | | | | | | | 2630 | 2630 | 2670 |
| | | | | | | | | | | | | 2250 | 2250 | 2280 |
| 15 | | | | | | | | | | | | | 2980 | 2980 |
| | | | | | | | | | | | | | 2740 | 2740 |
| | | | | | | | | | | | | | 2440 | 2440 |
| | | | | | | | | | | | | | 2090 | 2090 |
| 15.9 | | | | | | | | | | | | | | 2760 |
| | | | | | | | | | | | | | | 2540 |
| | | | | | | | | | | | | | | 2260 |
| | | | | | | | | | | | | | | 1930 |

| | |
|--|--|
| | Rated Capacity (kg) for 0°-10° articulation |
| | Rated Capacity (kg) for 11°-20° articulation |
| | Rated Capacity (kg) for 21°-30° articulation |
| | Rated Capacity (kg) for 31°-44° articulation |

WORKING RANGE

WITH COUNTERWEIGHT ON REAR

TIDD
CRANE IIII



NOTE: Rated capacity values shown are for the stationary chart on the hook.

AFTER SALES SUPPORT

TRT is proud to manufacture the TIDD PC28-2, and we are committed to supporting our product for its warranty and beyond. The team of highly experienced TIDD service technicians and agents are available to assist operators, fleet owners and workshops with training, advice, documentation and product upgrades.

PARTS

TRT stocks genuine spare parts for the TIDD PC28-2 in Australia and New Zealand. We can easily arrange overnight freight for all spares and service items to ensure the Crane is returned to service with minimal downtime.

Available from:



Ronco Construction Equipment & Engineering

33 Valencia Way, Maddington, WA 6109

P: 1800CRANES | (08) 9459 6212

E: tidd@ronco.com.au

www.ronco.com.au

TRT reserves the right to alter specifications without notice. Photographs and drawings in this document are for illustrative purposes only. Product shown in photos contains optional features. TRT in so far as it is permitted by law to do so, shall not be liable in any way as a result of any reliance by any person on anything contained in this brochure. Please contact us for current and detailed specifications. TRT (Aust) Pty Ltd / Tidd Ross Todd Ltd is the manufacturer of the TIDD PC28-2.

8092022

TRT
DESIGNED &
MANUFACTURED

TRT Australia

1028 Lytton Road, Murarrie, QLD 4172

Phone: +61 7 3890 8800

Email: cranesales@trtaust.com.au

www.trtaustralia.com.au

TRT New Zealand

48 Maui Street, Pukete Industrial Estate

P.O Box 10076, Te Rapa, Hamilton 3241

Phone: +64 7 849 4839 Email: cranesales@trt.co.nz

www.trt.co.nz