



SANY Telehandler Range
CALL 1800CRANES



Quality Changes the World



■ (08) 9459 6212 / 1800CRANES

■ www.ronco.com.au

■ 33 Valencia Way,
MADDINGTON WA 6109

Reliability

1 Premium Components

Powered by the Cummins/DEUTZ engine, SANY Telehandler comes fully equipped with premium brand components including DANA axle/gearbox, Kawasaki piston pump, Bosch Rexroth balance valve, etc.

2 Optimized Structure

The high-reliability boom and fork structure optimized by CAE under all working conditions are manufactured with high-strength steel to ensure that it can meet the high-intensity work of over 30,000 hours.

3 Strong Heat Dissipation

The load feedback hydraulic system greatly reduces heat generation, and it has a strong heat dissipation system, which makes it possible to handle the continuous operation even under 45 degrees Celsius.



Safety

1 Intelligent Protection System

SANY Telehandlers are equipped with power monitoring and protection system, real-time monitoring abnormal pressure, high water and diesel temperature to provide comprehensive protection of the engine and gearbox.

2 ROPS Cab

The Roll-Over Protective Structure (ROPS) brings highly effective engineering safety control that can avoid or reduce the severity of injuries in the event of overturns.

3 Tough Main Structure

The chassis of SANY Telehandler has been through a 500-hour fully-loaded rough terrain test, and the main boom has been both extended and retracted for 40,000 times with load to guarantee the durability.



Easy Management

1 IROOTECH System

Based on the GPS technology to achieve real-time fleet management, operation analysis and data record.

2 Fault Diagnosis System

Real-time display of all identifiable fault codes to facilitate timely troubleshooting.

3 Easy Maintenance

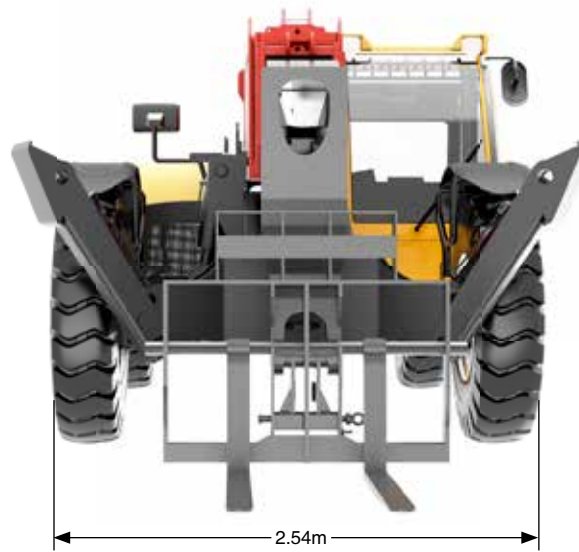
Easy access to both the rear hood and the right side hood for your daily maintenance including filter replacement, main valve maintenance, fault diagnosis and etc.



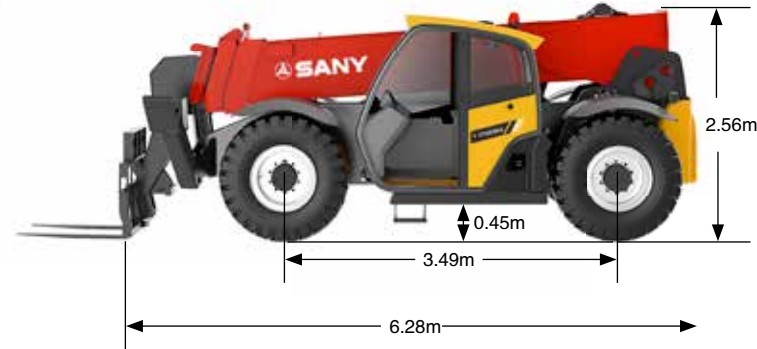
TECHNICAL PARAMETER

Description			Unit	STH1056A	STH1056A1	STH1256A	STH844A	STH634A
Configuration	Engine	Model		CUMMINS QSF3.8 T4F 97kW	CUMMINS QSF3.8 T4F 55kW	CUMMINS QSF3.8 T4F 97kW	CUMMINS QSF3.8 T4 55kW	DEUTZ TD2.9 55kW
		Rated power	Kw/rpm	97/2200	55/2200	97/2200	55/2200	55/2300
		Max. Torque	Nm/rpm	488/1600	400/1300	488/1600	400/1300	260/1800
		Emission Standard		Stage IV	Stage IV	Stage IV	Stage IV	Stage IV
	Gearbox			Dana 1120VDT12464	Dana 1104FVDT12366	Dana 1120VDT12464	Dana 1104FVDT12366	Dana 1104FVDT12366
	Axle			Dana 223/212HY	Dana 223/212HY	Dana 223/212HY	DANA 212HY/223	Dana 212
	Tyre			14.00-24-196A3-L-3S	14.00-24-196A3-L-3S	14.00-24-196A3-L-3S	13.00-24-16PR	15.00-19.5
Parameter	Rated Capacity		t	4.54	4.54	5.44	3.63	2.72
	Overall Weight		kg	15300	15300	16000	11600	7200
	Max. Lift Height		mm	17100	17100	17100	13400	10400
	Capacity at Max. Height		t	2.267	2.267	3.175	2.722	1.814
	Maximum Reach		mm	13100	13100	13100	9150	7000
	Capacity at Max. Reach		t	1.225	1.225	1.588	0.68	0.454
	Max. Hoisting Speed		s	15/15	15/15	15/15	13/10.5	11/9
	Max Descending Speed		s	19/19	19/19	19/19	15/13	14/14
	Max Travelling Speed		km/h	32	22.5	22.5	20	28
	Min. Ground Clearance		mm	457	457	457	430	350
	Min. Turning Radius		mm	4300	4300	4300	4300	4200
	Pitch Angel		°	71/-4	71/-4	71/-4	70/-7	70/-7
	Leveing Angel		°	±10	±10	±10	±10	±10
	Load Center		mm	610	610	610	610	610
	Gradeability (Loaded)		%	50	50	40	74.9	78
Size	Overall Length		mm	6167	6167	6167	6158	4989
	Overall Width		mm	2560	2560	2560	2466	2469
	Overall Height		mm	2550	2550	2550	2510	2488
	Wheel Base		mm	3490	3490	3490	3420	3140
Fork	60in	size(length*width*thickness)	mm	1524×152×60	1524×152×60	1524×152×60	1524×152×60	1524×152×60
		Adjustment Range	mm	676~1522	676~1522	676~1522	676~1522	676~1522
	72in	Size(Length*Width*Thickness)	mm	1829×152×60	1829×152×60	1829×152×60	1829×152×60	
		Adjustment Range	mm	694~1829	694~1829	694~1829	694~1829	
	Rotate	Size(Length*Width*Thickness)	mm	1524×152×60	1524×152×60	1524×152×60	1524×152×60	
		Adjustment Range	mm	354~1524	354~1524	354~1524	354~1524	

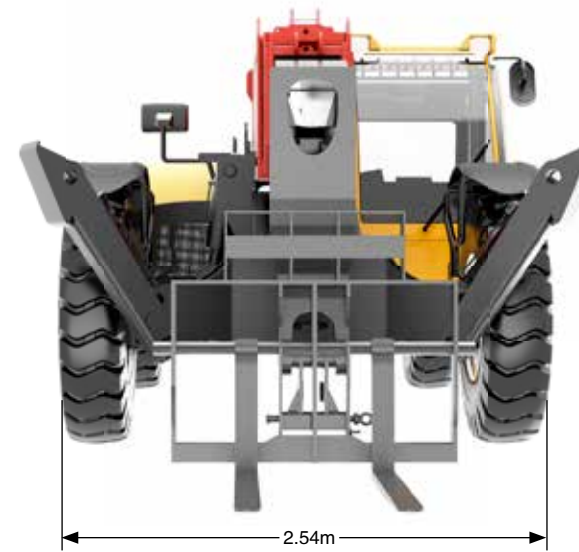
STH1056A Dimensions



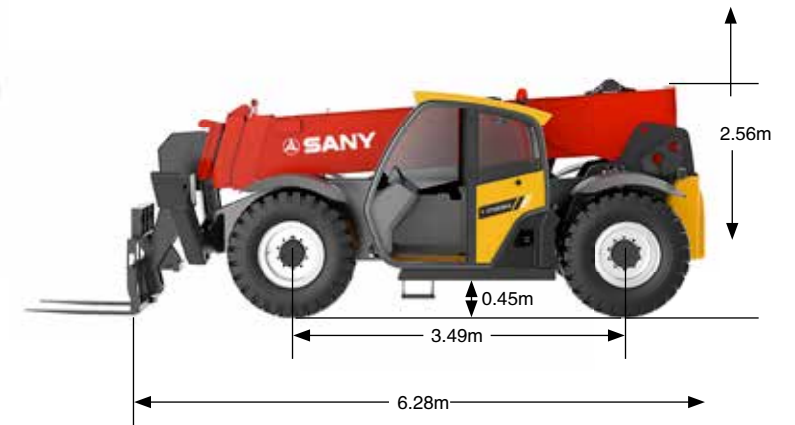
Loading Diagram with
Outrigger



Loading Diagram without
Outrigger

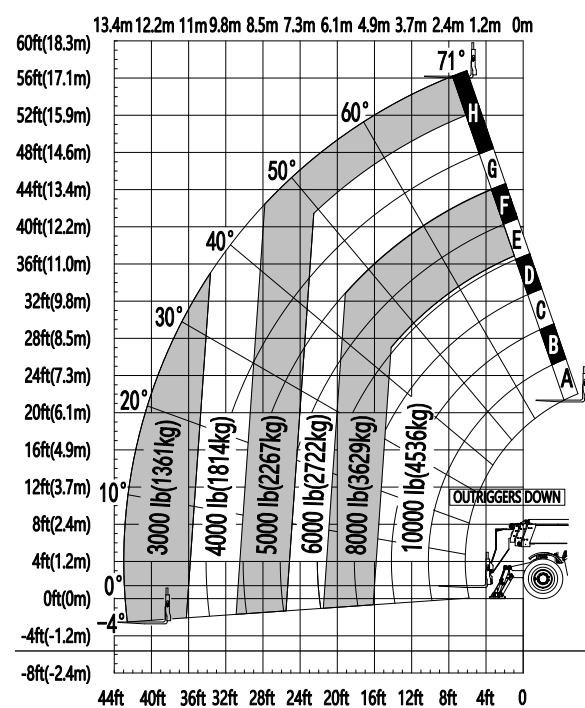


Loading Diagram with
Outrigger

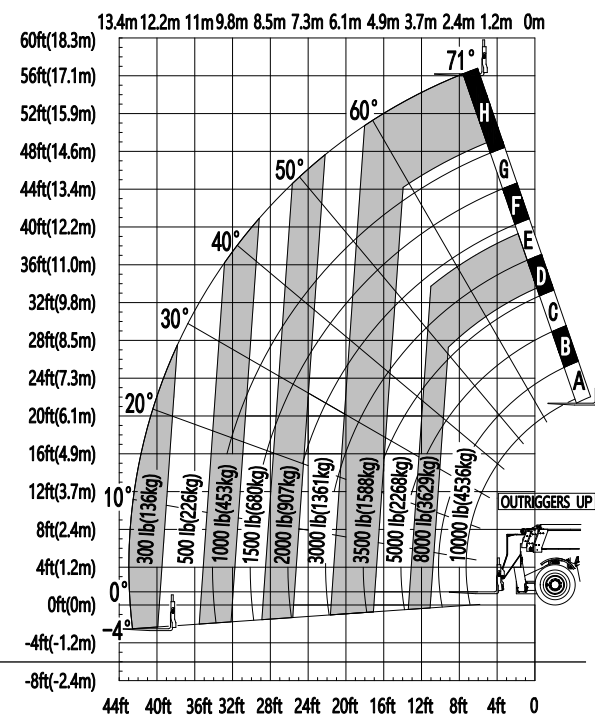


Loading Diagram without
Outrigger

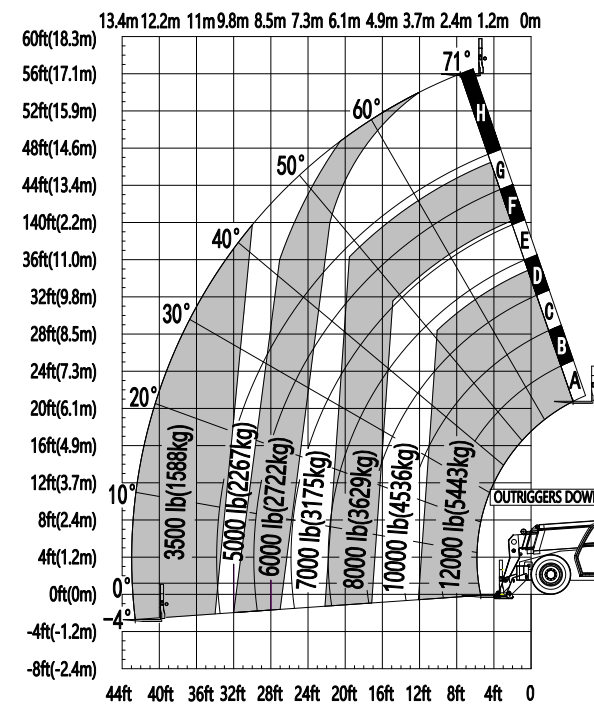
1056 DOWN



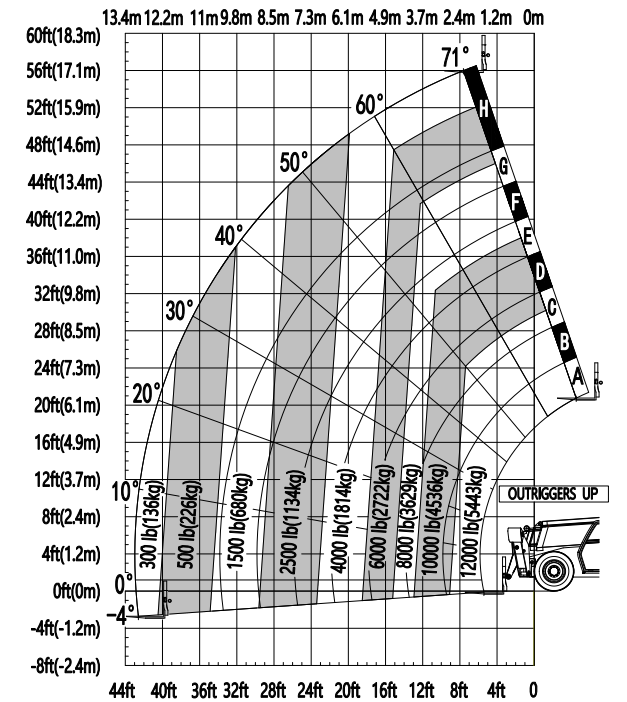
1056 UP



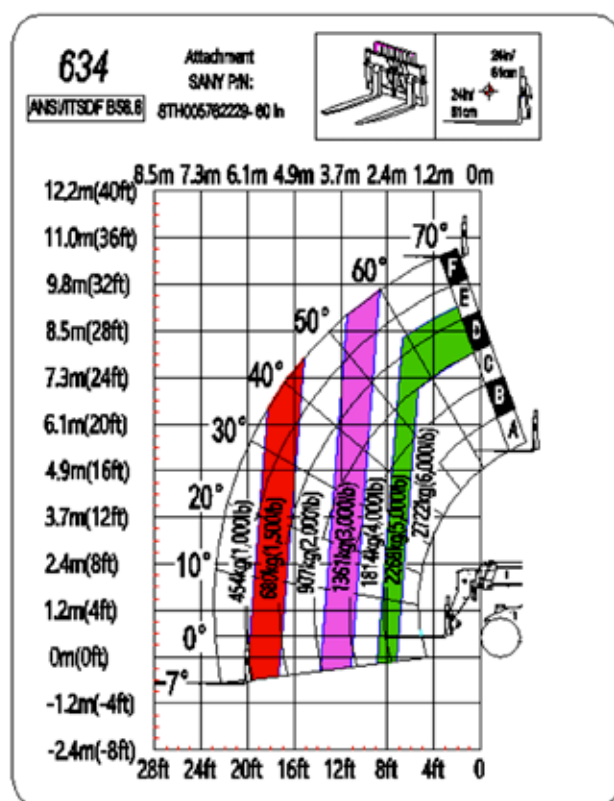
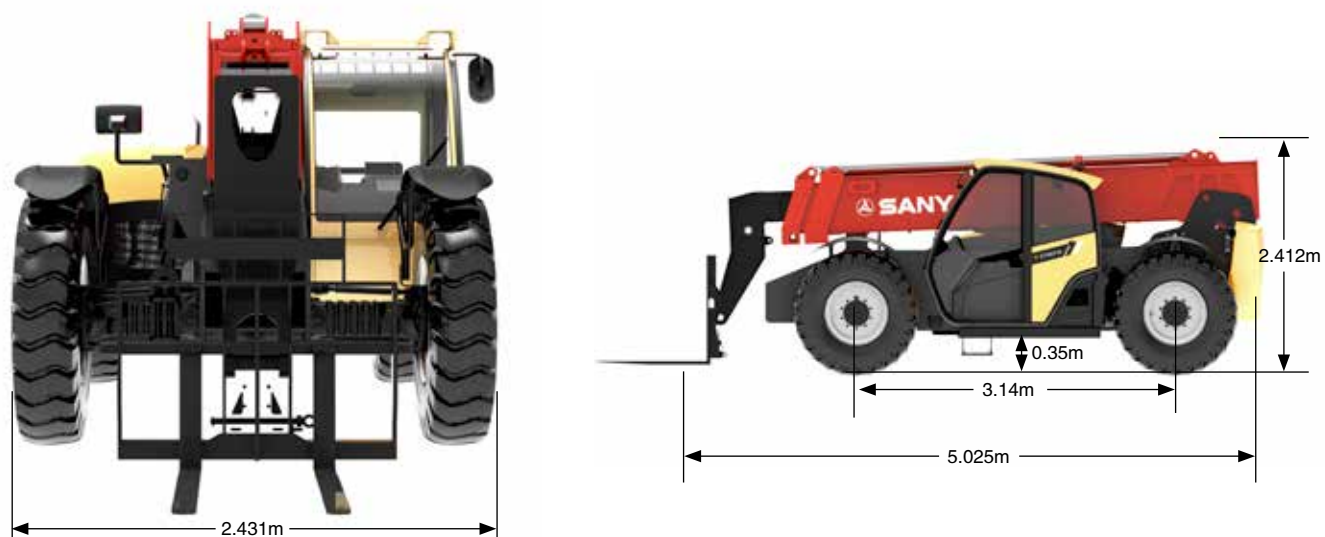
1256 DOWN



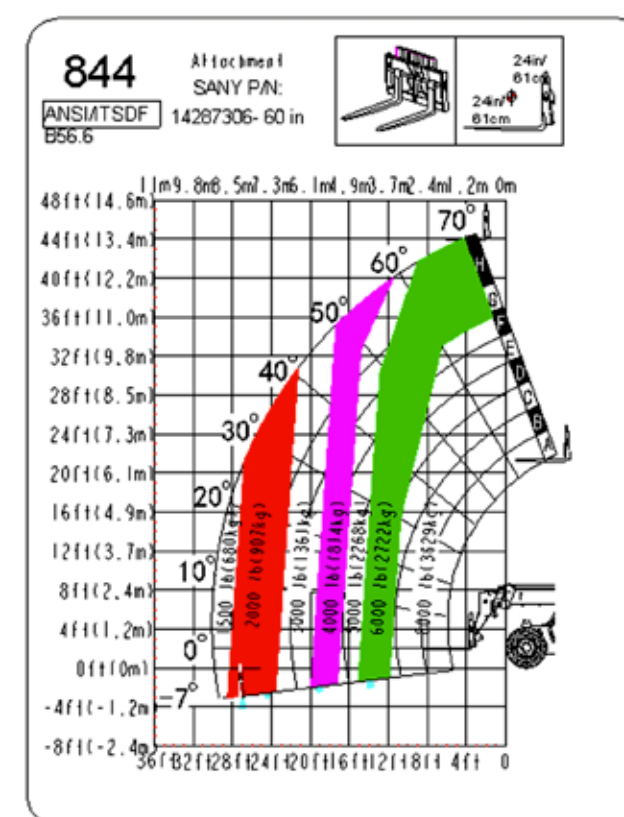
1256 UP



STH634A Dimensions



STH844A Dimensions



Shots from the Jobsites

