



Construction Equipment & Engineering

Vehicle Loading Cranes

CALL 1800CRANES



HV27 KEY FEATURES

The HV series of compact articulated cranes strike the perfect balance between cost effectiveness and peak performance. Simple to use yet capable of hard work, these cranes are available in seven different lifting capacities.

International Market

**Leader in Waste
Handling Equipment
and**

Transport Solutions.

HYVALIFT MOVES
YOUR WORLD

■ (08) 9459 6212 / 1800CRANES
■ 0407 669 174

■ www.ronco.com.au
■ hyva@ronco.com.au

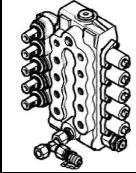
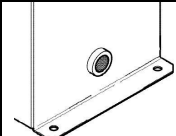
HV27 TECHNICAL SHEET

TECHNICAL DATA

Max dynamic moment (daNm)	3210
---------------------------	------

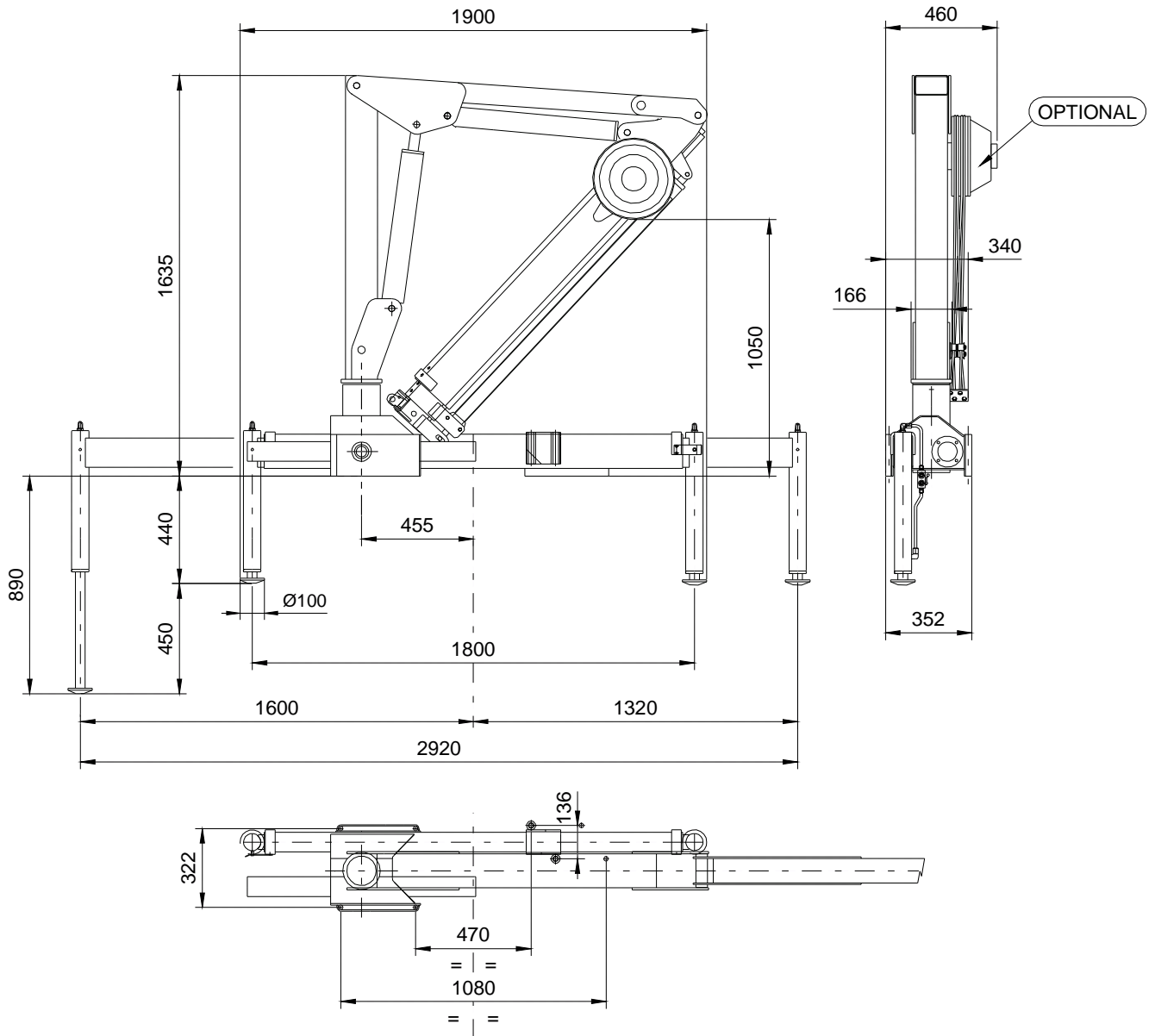
Max capacity [kg]	Version	Q_{max}
	E2	835
	E3	785

Crane weight [kg]	Version	HV27
	E2	390
	E3	420

Max force on the stabilizer leg	2200 daN
Max standard stabilizer pressure on the ground no CE Ø100	28 daN/cm ²
Max standard stabilizer pressure on the ground CE Ø110	23.2 daN/cm ²
Max working pressure	205 bar
Max oil flow to main relief valve	10 dm ³ /min
Oil tank capacity	17.5 dm ³
Slewing moment	390 daNm
Slewing angle	370°
Absorbed power	3.7 kW 4.9 HP
Design standard	DIN 15018 EN 12999
Fittings for connection with pump	NO RDC
Distributor Pressure line =	 DIN L 16X1.5-10-10
Tank Suction line =	 F1/2" BSP

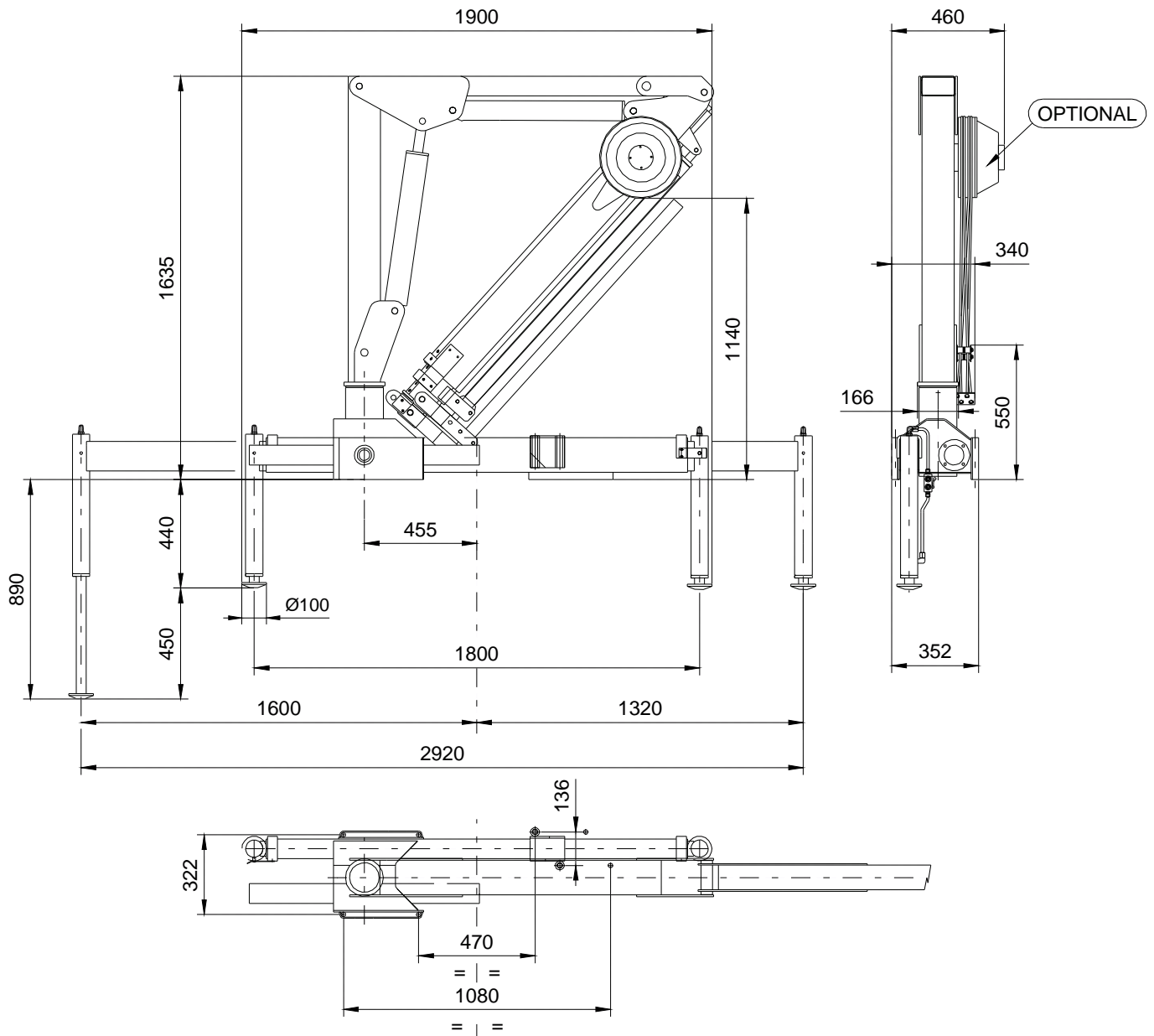
HV27 TECHNICAL SHEET

OVERALL DIMENSIONS E2 (NO CE LEGS)



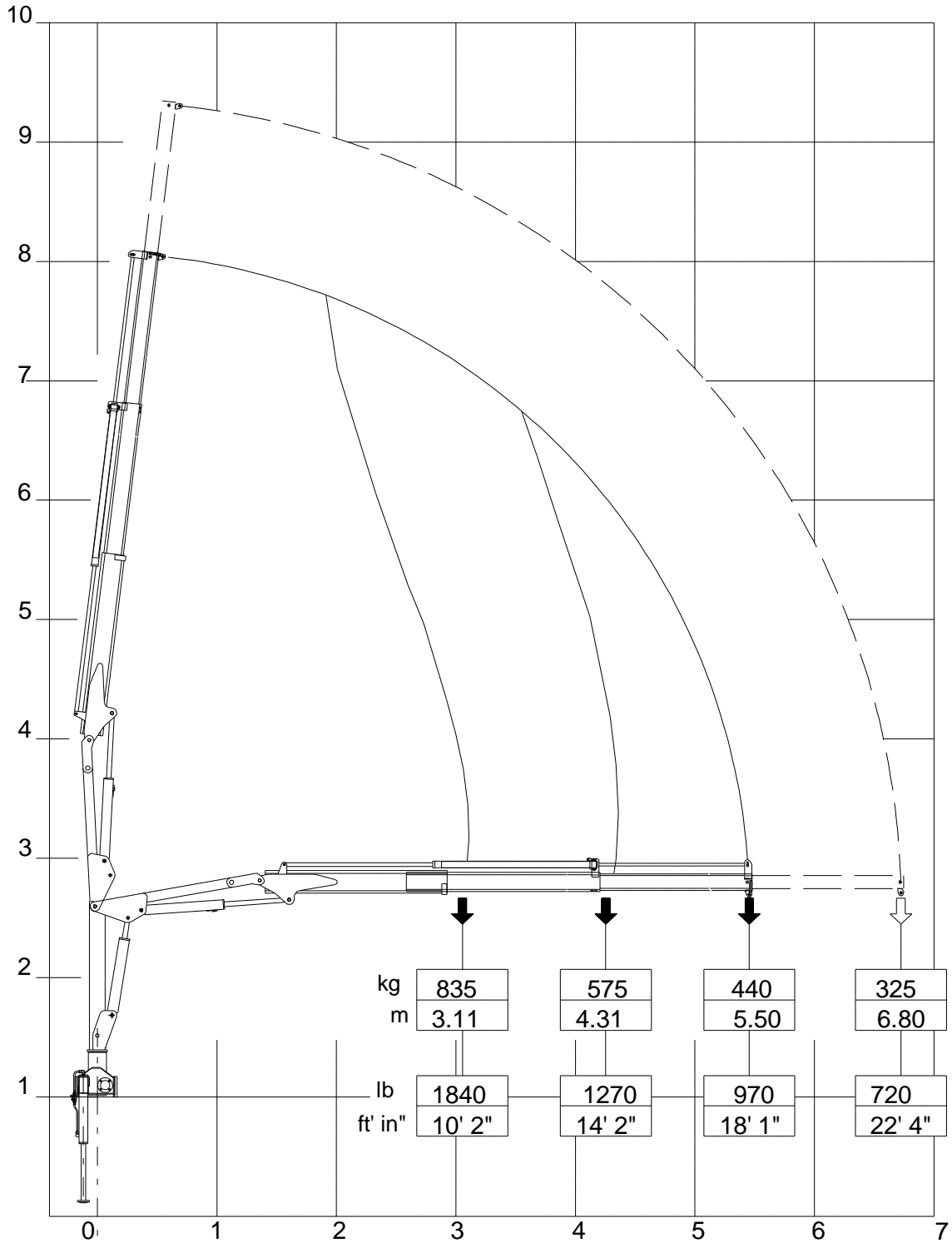
HV27 TECHNICAL SHEET

OVERALL DIMENSIONS E3 (NO CE LEGS)



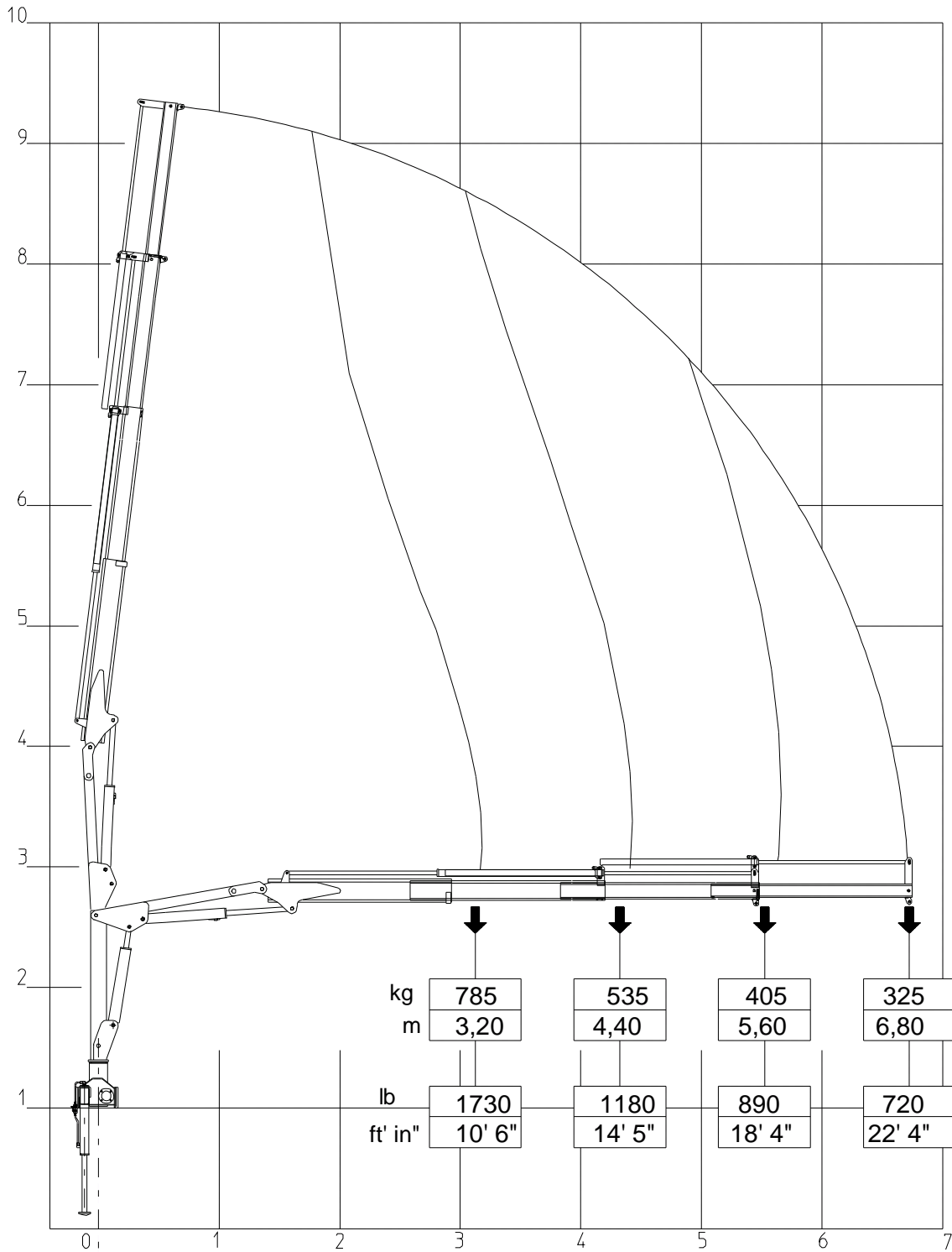
HV27 TECHNICAL SHEET

LOAD DIAGRAM E2



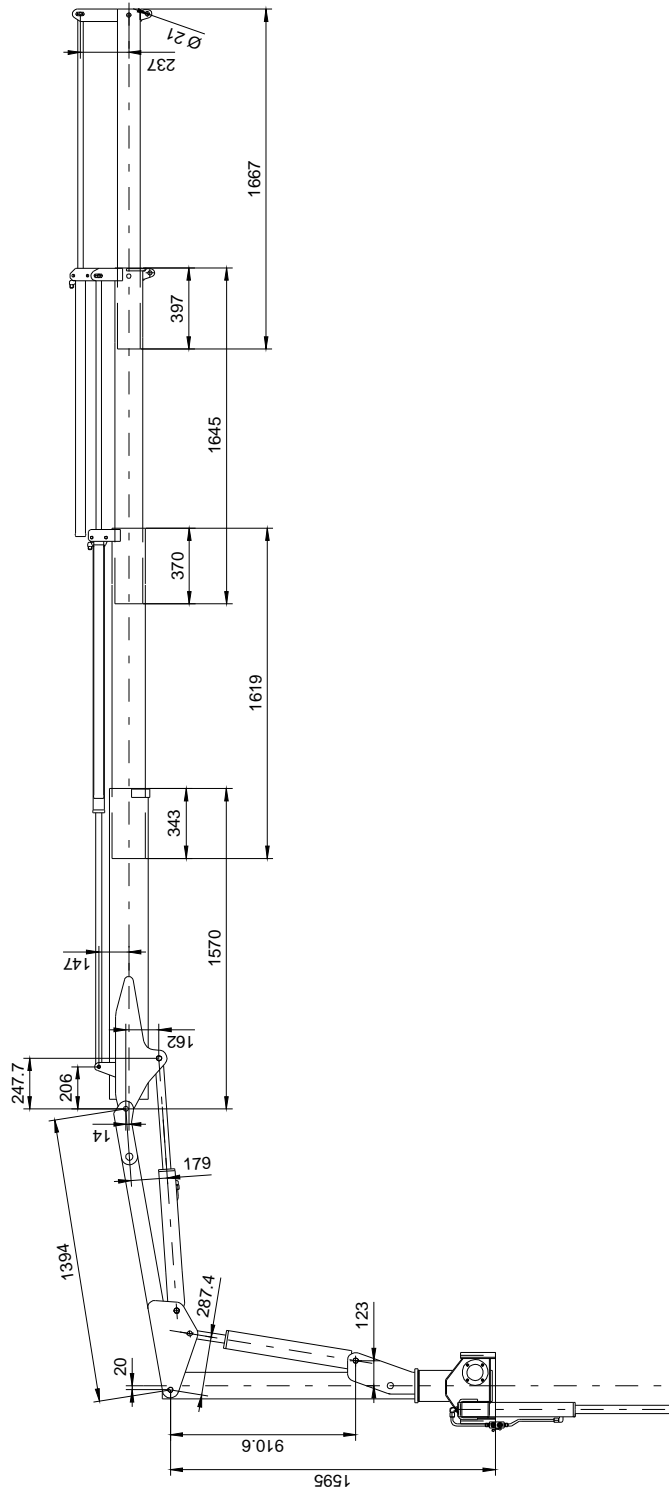
HV27 TECHNICAL SHEET

LOAD DIAGRAM E3



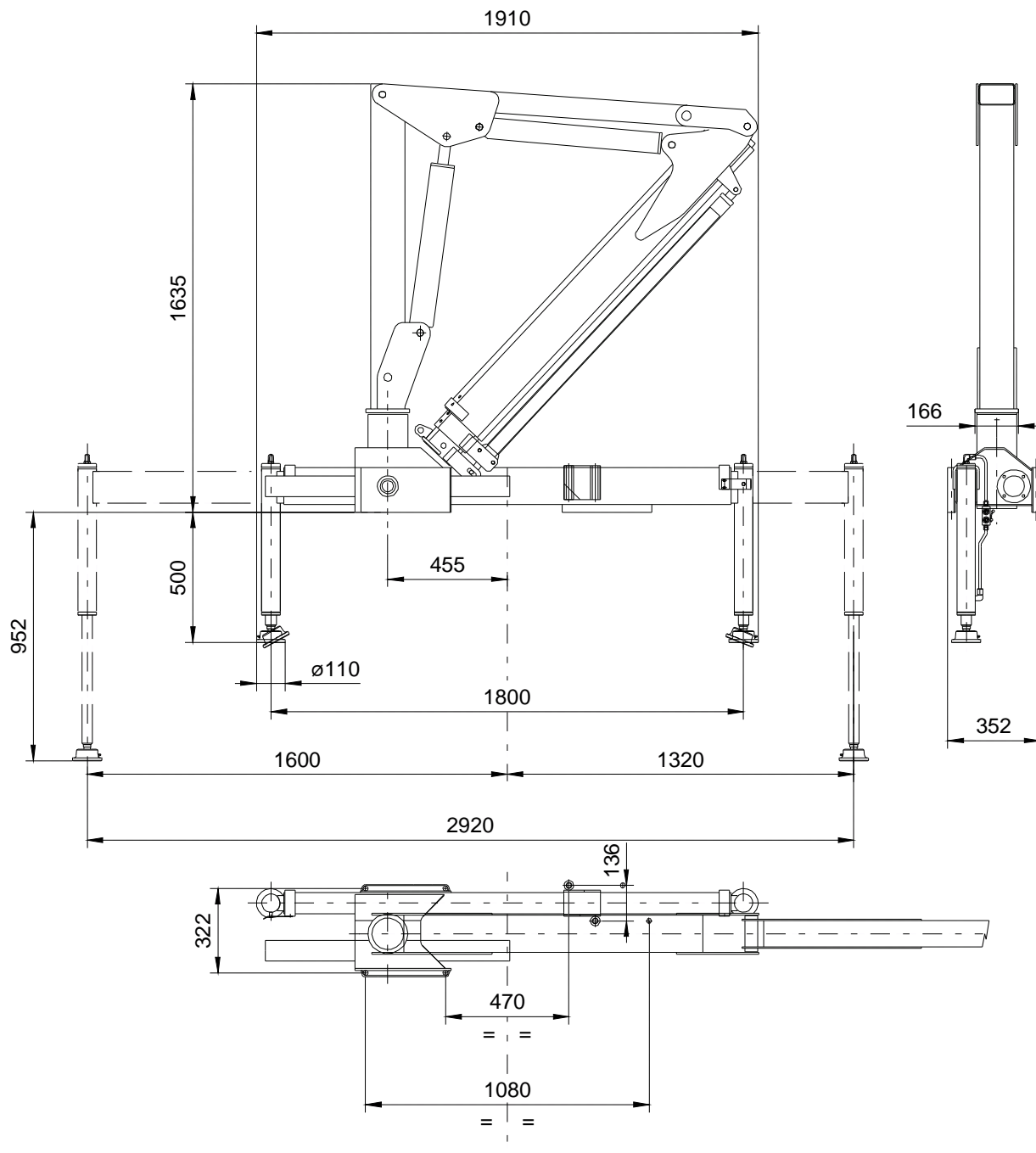
HV27 TECHNICAL SHEET

BOOM SYSTEM DIMENSIONS



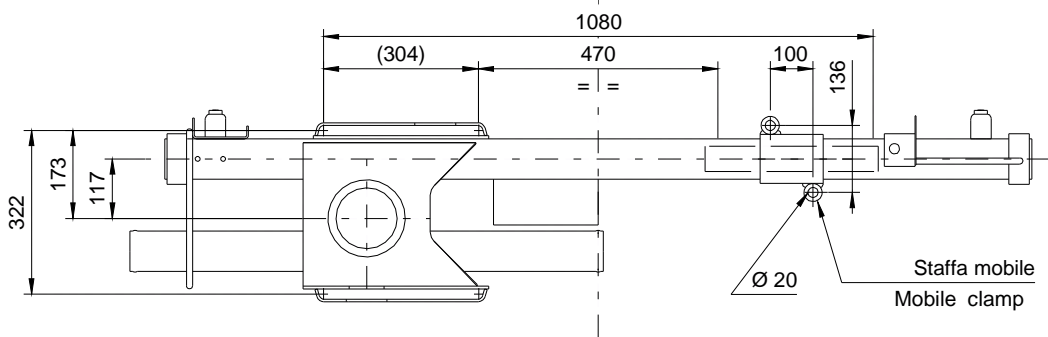
HV27 TECHNICAL SHEET

DIMENSIONS WITH CE CYLINDERS



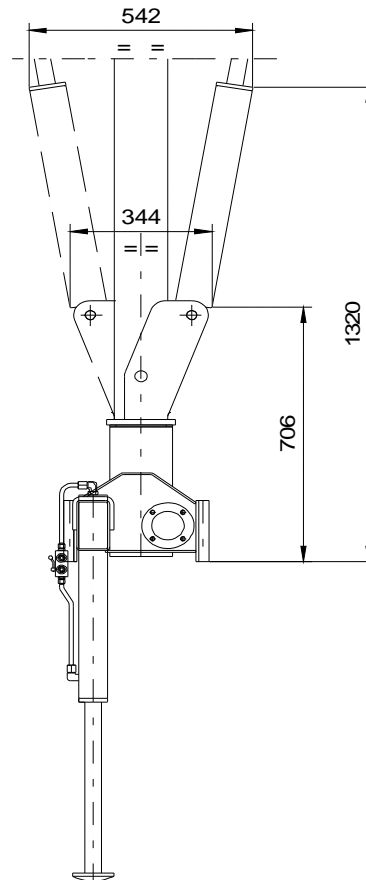
HV27 TECHNICAL SHEET

BASE DIMENSIONS, TIE RODS & ROTATION SCREWS



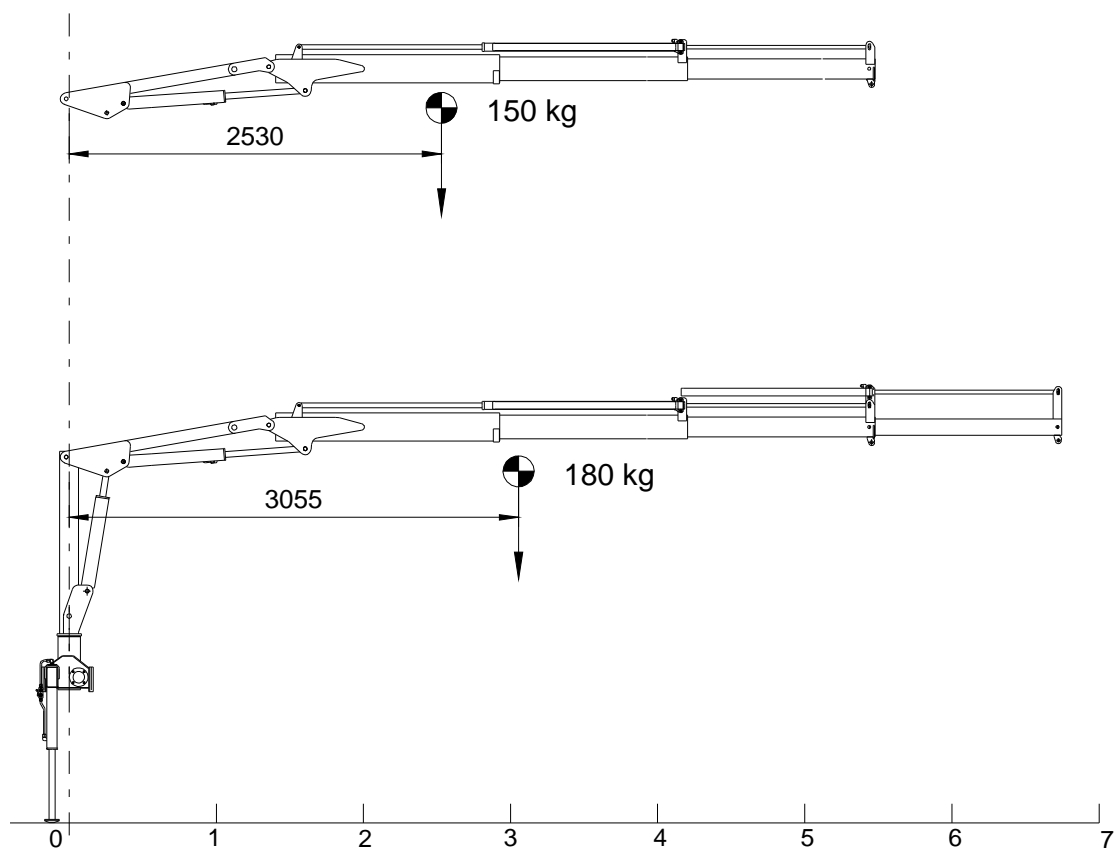
Tie mounting rods	N°6 M18x1.5 42CrMo4
Fixing bolts for 1 rotation cylinder	N°4 M12x35 8.8 UNI 5931 Tightening torque 50 Nm

ROTATION RADIUS



HV27 TECHNICAL SHEET

WEIGHTS - CENTER OF GRAVITY



	HV27
Fixed parts weights [kg]	240

HV27 TECHNICAL SHEET

CYLINDERS DIMENSIONS

LIFTING CYLINDER

<i>Cylinder bore</i>	80
<i>Cyl. ext. diameter</i>	90
<i>Rod diameter</i>	40 - 0
<i>Centers (open)</i>	1165
<i>Centers (closed)</i>	700
<i>Stroke</i>	465
<i>Fittings</i>	1/4" G
<i>Artic. pin Ø</i>	25
<i>Pin steel</i>	42CrMo4 QT

ARTICULATION CYLINDER

<i>Cylinder bore</i>	70
<i>Cyl. ext. diameter</i>	80
<i>Rod diameter</i>	40 - 0
<i>Centers (open)</i>	1241
<i>Centers (closed)</i>	731
<i>Stroke</i>	510
<i>Fittings</i>	1/4" G
<i>Fixing pin Ø</i>	25
<i>Pin steel</i>	42CrMo4 QT

1ST EXTENSION CYL.

<i>Cylinder bore</i>	45
<i>Cyl. ext. diameter</i>	55
<i>Rod diameter</i>	30 - 0
<i>Centers (open)</i>	2604
<i>Centers (closed)</i>	1404
<i>Stroke</i>	1200
<i>Fittings</i>	1/4" G
<i>Artic. pin Ø</i>	15
<i>Pin steel</i>	42CrMo4 QT

2ND - 3RD EXTENSION CYL.

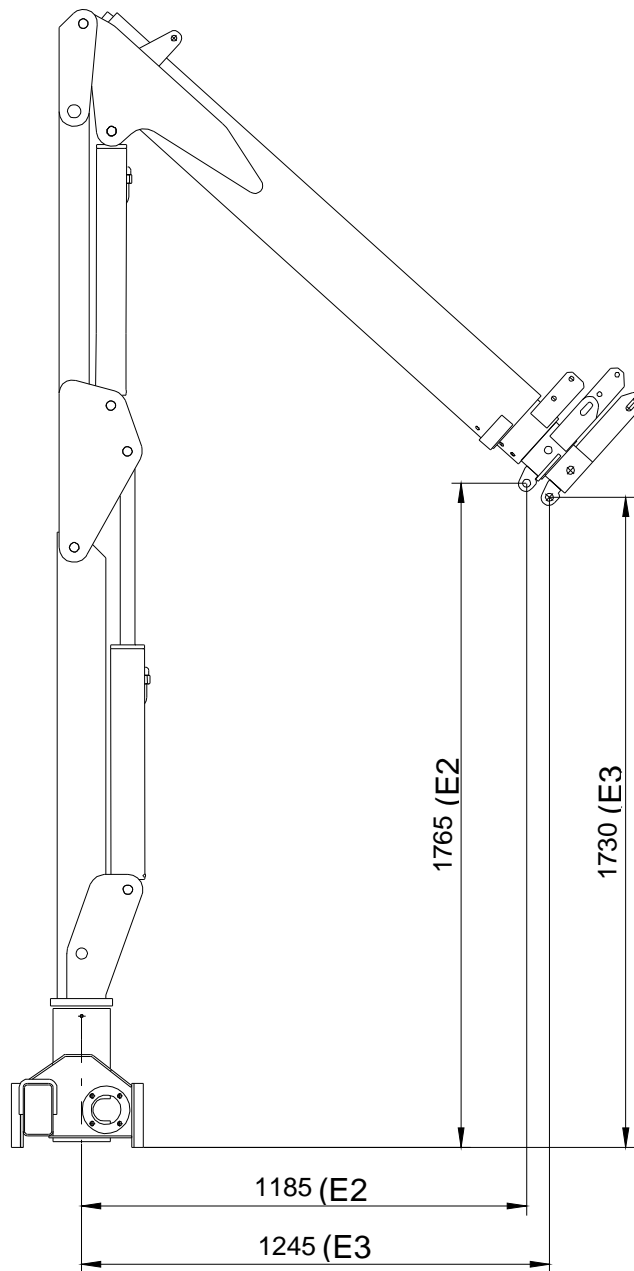
<i>Cylinder bore</i>	40
<i>Cyl. ext. diameter</i>	50
<i>Rod diameter</i>	25 - 0
<i>Centers (open)</i>	1283
<i>Centers (closed)</i>	83
<i>Stroke</i>	1200
<i>Fittings</i>	1/4" G
<i>Fixing pin Ø</i>	15
<i>Pin steel</i>	42CrMo4 QT

ROTATION CYLINDER

<i>Cylinder bore</i>	70
<i>Cyl. ext. diameter</i>	80
<i>Rod diameter</i>	-
<i>Centers (open)</i>	-
<i>Centers (closed)</i>	-
<i>Stroke</i>	330
<i>Fittings</i>	-
<i>Fixing pin Ø</i>	-
<i>Pin steel</i>	-

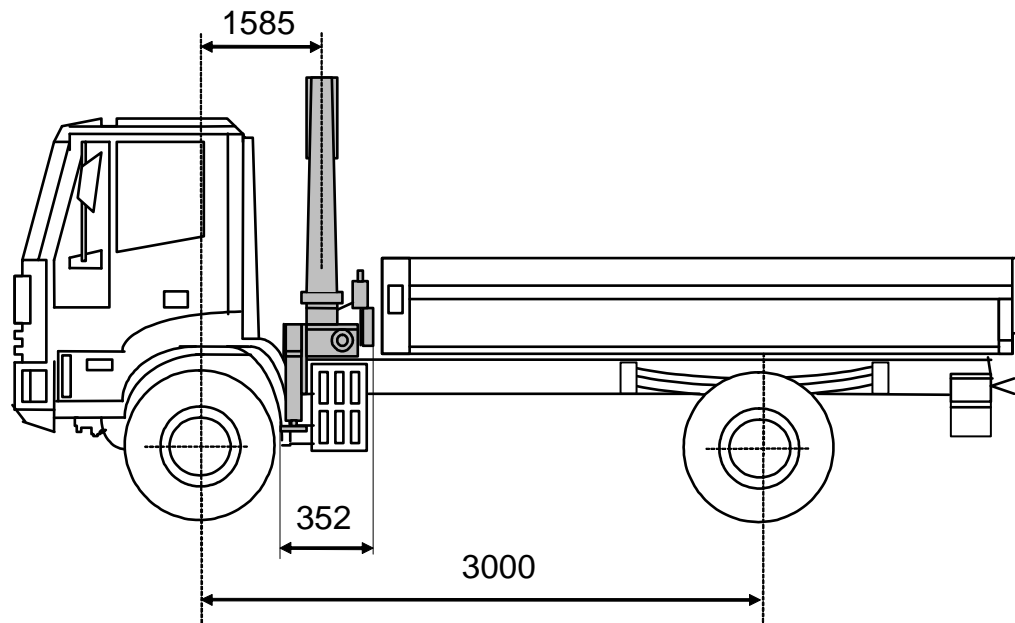
HV27 TECHNICAL SHEET

HOOK HEIGHT



HV27 TECHNICAL SHEET

MIN TRUCK WITHOUT SUPPLEMENTARY STABILIZERS



PTT (GVW) = 3,5 ton

CHASSIS DATA

Front axle

Front axle tare weight = 1375 kg

Allowable front axle weight = 1800 kg

Rear axle

Rear axle tare weight = 590 kg

OUTFIT WEIGHTS

Body weight = 200 kg

Crane weight = 420 kg (HV27 E3)

Counterframe weight = 100 kg

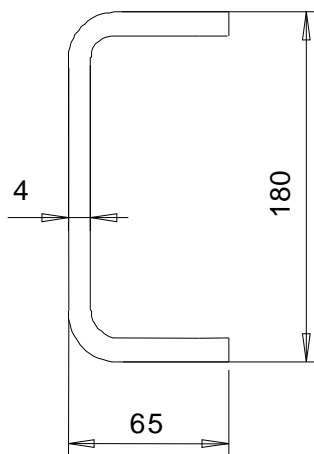
Stability index = 1,52

HV27 TECHNICAL SHEET

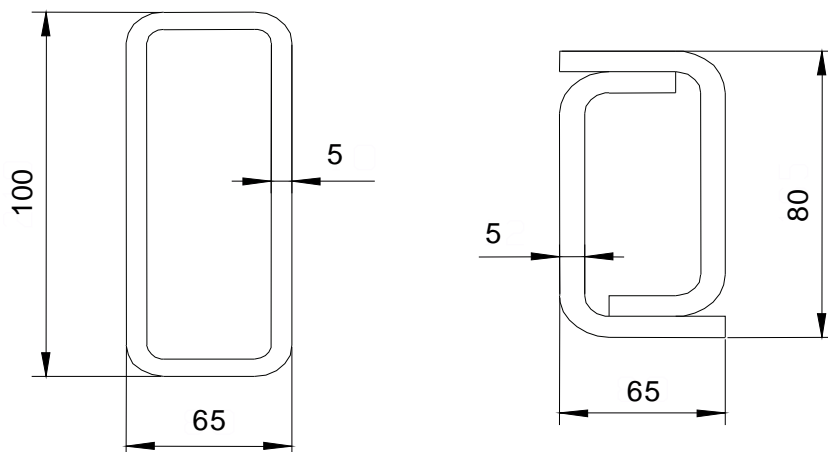
MIN COUNTERFRAME

Max dynamic moment [daNm]	3210
---------------------------	------

Min frame section (truck GVW 3,5 ton; steel S355)



Min counterframe section (steel S355)



HV27 TECHNICAL SHEET

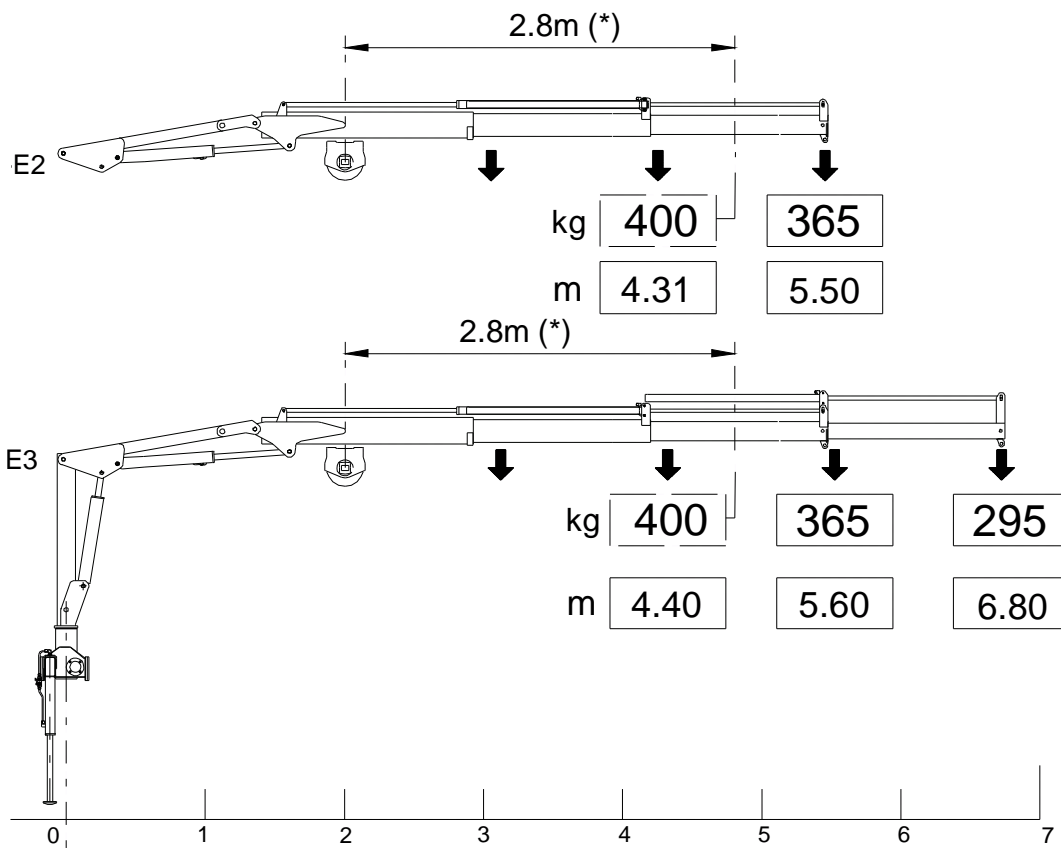
HYDRAULIC WINCH DATA

CRANE E2

Max winch direct pull [kg]	400
----------------------------	-----

CRANE E3

Max winch direct pull [kg]	250
----------------------------	-----

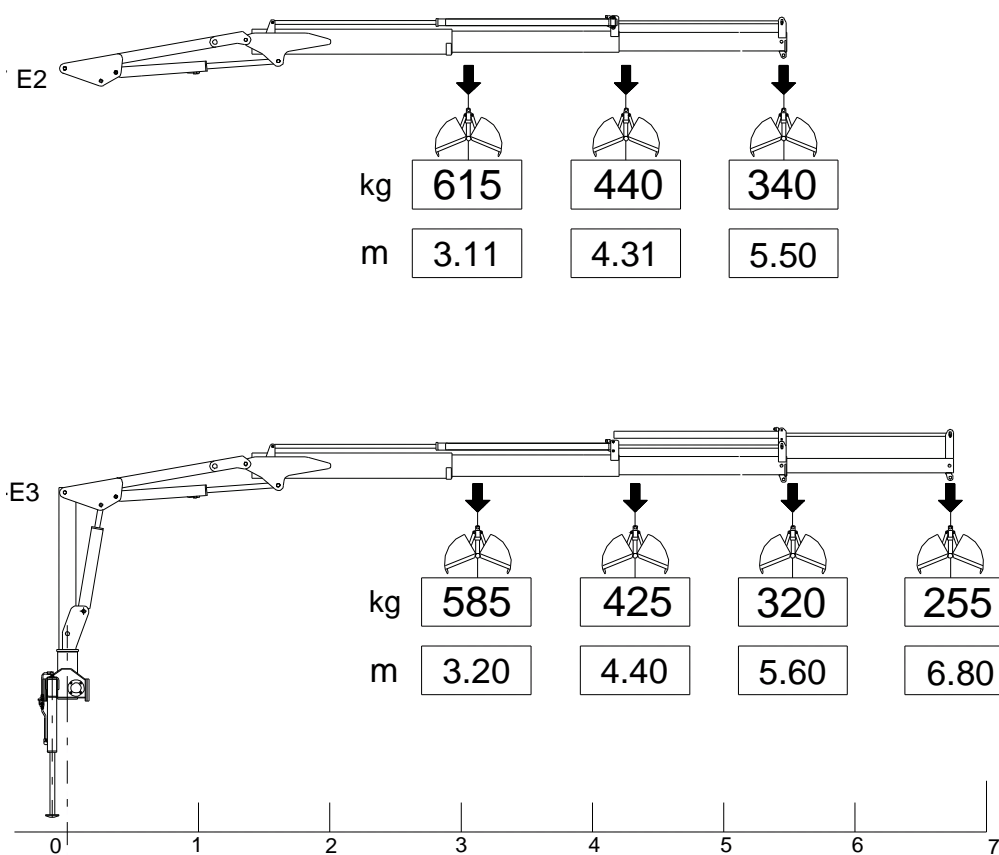


- (*) = Distanza minima di utilizzo argano
- (*) = Min distance for using the winch
- (*) = Min Abstand für Benutzung der Winde

HV27 TECHNICAL SHEET

GRAB - BUCKET DATA

Max allowable weight [kg]	70
Max working pressure [bar]	170
THE CAPACITIES OF THE ACTIVATED CRANES (FOR GRAB OR BUCKET) ARE DERATED BY 30% RESPECT TO THE STANDARD CRANES	





Vehicle Loading Cranes

