

HYVA[®] CRANE HV SERIES



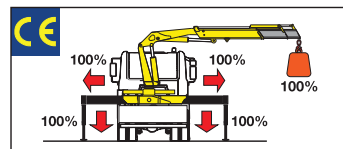
MODELS	LIFTING MOMENT Tm	MAX VERTICAL REACH m		SLEWING ANGLE °	SLEWING TIME s/180°	MAX WORKING HEEL °	WORKING PRESSURE bar	CRANE WEIGHT WITHOUT STABILIZERS kg	OIL TANK CAPACITY l	OIL FLOW l/min	DIMENSIONS mm B x h x S
		HYD.	MAN.								
HV27 E2	2,60	7,93	9,19	370	13	4	205	330	17,5	10	1900x1635x352
HV27 E3	-	7,93	9,19	370	13	4	205	360	17,5	10	1900x1635x352
HV47 E1	4,30	7,22	8,51	380	16	4	270	565	48	14	2155x1955x420
HV47 E2	-	8,51	9,81	380	16	4	270	615	48	14	2155x1955x420
HV47 E3	-	9,81	11,1	380	16	4	270	660	48	14	2155x1955x420
HV77 E1	7,55	7,81	9,22	380	16	4	250	770	48	16	2320x2030x565
HV77 E2	-	9,22	10,6	380	16	4	250	830	48	16	2320x2030x565
HV77 E3	-	10,6	12,0	380	16	4	250	890	48	16	2320x2030x565
HV107 E1	9,56	9,30	11,0	380	15	4	275	1030	100	25	2490x2320x635
HV107 E2	-	11,0	12,9	380	15	4	275	1130	100	25	2490x2320x635
HV107 E3	-	12,9	14,9	380	15	4	275	1220	100	25	2490x2320x690
HV147 E1	13,9	9,54	11,3	380	15	4	285	1375	100	25	2500x2455x820
HV147 E2	-	11,3	13,1	380	15	4	285	1490	100	25	2500x2455x820
HV147 E3	-	13,1	15,0	380	15	4	285	1595	100	25	2500x2455x820
HV197 E1	19,1	9,35	11,0	380	15	4	295	1715	150	40	2500x2475x920
HV197 E2	-	11,0	12,8	380	15	4	295	1850	150	40	2500x2475x920
HV197 E3	-	12,8	14,6	380	15	4	295	1975	150	40	2500x2475x920
HV227 E1	20,5	9,35	11,0	380	15	4	315	1745	150	40	2500x2475x945
HV227 E2	-	11,0	12,8	380	15	4	315	1880	150	40	2500x2475x945
HV227 E3	-	12,8	14,6	380	15	4	315	2005	150	40	2500x2475x945

E = Number of hydraulic extensions, - E3 = three extensions

Stability control system (CE)

No HV27

HM System



The **HM System** integrated in the load limiting device checks the stabilizers' positions. Only when all beams are fully open and all stabilizers are on the ground the crane can operate and lift loads.



Control display



RONCO[®]

Construction Equipment & Engineering

Call 1800 CRANES



Products and Services

Your Local Dealer

Ronco offers complete solutions to the owners and purchasers of all manner of plant and equipment.

- Sales of new plant & machinery
- Disposal of old plant machinery
- Procurement of non-mainstream equipment
- Design and manufacture capability
- Maintenance and repairs facility
- Plant storage yard
- EPA approved steam cleaning
- Abrasive blasting
- Short term dry hire (Cranes, Gensets, Compressors, Lifting Equipment etc..)

Service: Major Inspections / Boom Repairs / Lattice Replacement / Annual Inspections / De Mobilisation and Commissioning Transport Services / Environmental Cleaning / Design and Engineering

Hyva Products: VLCs / Skip Loaders / Hook Loaders / Refuse Compactors / Amco Veba Marine Cranes / EWP's

Sany Products: Lattice Boom Crawler Cranes / Telescopic Boom Crawler Cranes / Rough - Terrain Cranes / All-Terrain Cranes / Truck Cranes / Excavators / Material Handlers / Port Machinery / Road Machinery

■ 1800CRANES
■ (08) 9459 6212

■ 0407 669 174
■ hyva@ronco.com.au
■ ronco@ronco.com.au

■ www.ronco.com.au
■ 33 Valencia Way,
Maddington, WA 6109

TRUCK MOUNTED CRANES HV SERIES



STANDARD

- Dual-side controls
- Hexagonal booms
- Sliding pads on telescopic extensions
- Self-lubricating bushings
- Manually opening stabilizers
- Swivel stabilizer foot (CE)
- Proportional pressure transducer on main cylinder (CE) (No HV27)
- Sensor for correct stowing of the crane (CE)
- Designed in accordance with: EN12999-DIN15018
- Fatigue test classification: B3
- Load limiting device (CE) (No HV27)
- Mechanical rotation limitation (CE)
- Light indicator for correct stabilizer stowing (CE)
- Oil tank

ACCESSORIES

- Supplementary elements activation
- Assembly kit
- Winch (No HV27 - HV47 E1)
- Hydraulic opening stabilizers (HV147 - HV197 - HV227)
- Extra cross beams
- Manual extensions
- Manually extra extensible stabilizers (HV77 - HV107)
- "Green" Oil

HYVA[®] CRANE HV SERIES



Reduced repair cost, thanks to innovations like a replaceable column pinion (HV27-HV47-HV77).

High elevation angle

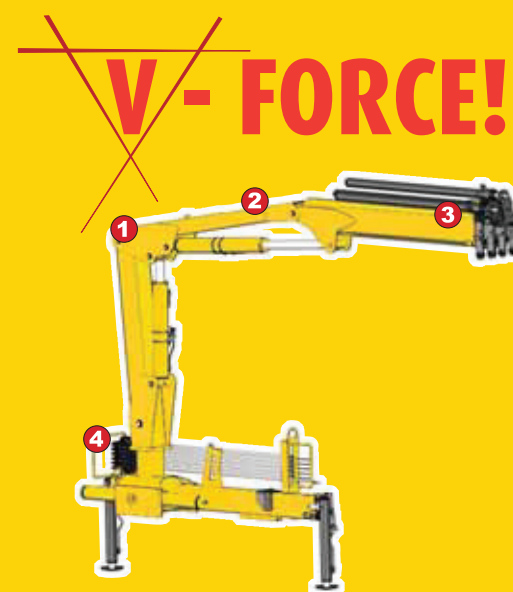
Smaller installation space required

Inline second boom with these advantages:

1. **Higher resistance** - the boom of this crane only needs to carry the weight of the load, but standard offset booms are also subjected to torsional stress.
2. **Less weight** - the absence of the offset results in a lighter boom.
3. **Small dimensions** - the absence of the offset makes the boom more compact.

Higher load capacity with closed horizontal boom

+12 %



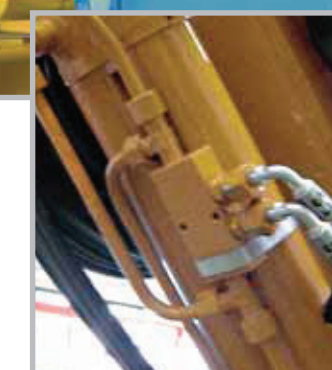
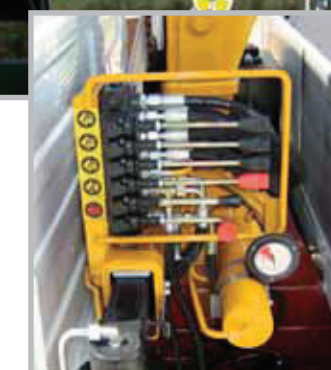
- 1 Simplified structure thanks to one-piece high-tensile steel tubing (up to 40% weight saving).
- 2 Higher load capacity with extensions retracted.
- 3 Less installation space required due to in-line second boom.
- 4 Lower hydraulic pressure requested:
 - Only gear pump necessary (HV27)
 - Less stress on the crane's components
 - Less heating.



■ 1800CRANES
■ (08) 9459 6212

■ 0407 669 174
■ hyva@ronco.com.au
■ ronco@ronco.com.au

■ www.ronco.com.au
■ 33 Valencia Way,
Maddington, WA 6109



HV27 E2	
kg	2600* 1300* 835 575 440 325
m	1.0 2.0 3.11 4.31 5.50 6.80
HV27 E3	
kg	2520* 1260* 785 535 405 325
m	1.0 2.0 3.20 4.40 5.60 6.80
HV47 E1	
kg	4300* 2150* 1325 965 705
m	1.00 2.00 3.23 4.44 5.75
HV47 E2	
kg	4170* 2085* 1250 900 705 540
m	1.00 2.00 3.33 4.54 5.75 7.06
HV47 E3	
kg	4060* 2030* 1180 845 650 540 425
m	1.00 2.00 3.43 4.64 5.85 7.06 8.37
HV77 E1	
kg	7550* 3775* 2195 1560 1140
m	1.00 2.00 3.43 4.79 6.23
HV77 E2	
kg	7340* 3670* 2085 1470 1140 870
m	1.00 2.00 3.51 4.87 6.23 7.66
HV77 E3	
kg	7130* 3565* 1990 1405 1080 870 665
m	1.00 2.00 3.58 4.94 6.30 7.66 9.05
HV107 E1	
kg	9560* 3915 2425 1720 1230
m	1.00 2.42 3.91 5.56 7.35
HV107 E2	
kg	9180* 3770 2300 1605 1230 895
m	1.00 2.42 3.99 5.64 7.34 9.22
HV107 E3	
kg	8880* 3670 2170 1485 1120 895 675
m	1.00 2.42 4.08 5.73 7.43 9.22 11.17
HV147 E1	
kg	13870* 5820 3455 2485 1815
m	1.00 2.34 3.93 5.58 7.36
HV147 E2	
kg	13360* 5655 3295 2355 1815 1380
m	1.00 2.34 4.01 5.66 7.36 9.23
HV147 E3	
kg	12930* 5525 3160 2250 1715 1380 1015
m	1.00 2.34 4.08 5.73 7.43 9.23 11.14
HV197 E1	
kg	19110* 7965 4715 3395 2510
m	1.00 2.33 3.98 5.63 7.41
HV197 E2	
kg	18600* 7765 4520 3240 2510 1915
m	1.00 2.33 4.06 5.71 7.41 9.28
HV197 E3	
kg	17940* 7610 4345 3100 2380 1915 1510
m	1.00 2.33 4.13 5.78 7.48 9.28 11.15
HV227 E1	
kg	20520* 8490 5035 3645 2710
m	1.00 2.33 3.98 5.63 7.41
HV227 E2	
kg	20080* 8460 4835 3485 2710 2075
m	1.00 2.33 4.06 5.71 7.41 9.28
HV227 E3	
kg	19370* 8315 4670 3330 2570 2075 1640
m	1.00 2.33 4.13 5.78 7.48 9.28 11.15

*) Theoretical lifting capacity