

HYVA[®] CRANE HA SERIES



MODELS	LIFTING MOMENT	MAX VERTICAL REACH	SEWING ANGLE	SEWING TIME	MAX WORKING REEL	WORKING PRESSURE	CRANE WEIGHT WITHOUT STABILIZERS	OIL TANK CAPACITY	OIL FLOW	DIMENSIONS
	tm	m	°	s/180°	kg	bar	kg	l	l/min	mm B x h x S
HA10 E1	1,00	3,01	328	16	3	180	145	17,5	5	595x1240x370
HA10 E2	-	3,85	328	16	3	180	164	17,5	5	647x1241x370
HA15 E1	1,30	3,00	335	10	3	160	174	17,5	8	620x1241x430
HA15 E2	-	3,80	335	10	3	160	193	17,5	8	672x1241x430
HA22 E1	2,00	3,58	335	10	3	160	216	17,5	8	695x1487x430
HA22 E2	-	4,51	335	10	3	160	240	17,5	8	710x1487x430
HA22 E3	-	5,50	335	10	3	150	262	17,5	8	868x1521x430
HA28 E1	2,75	3,74	335	16	3	160	263	17,5	10	730x1587x440
HA28 E2	-	4,64	335	16	3	160	295	17,5	10	753x1587x440
HA28 E3	-	5,54	335	16	3	160	321	17,5	10	753x1587x440
HA33 E1	3,45	3,94	395	16	3	175	301	17,5	10	976x1702x440
HA33 E2	-	4,98	395	16	3	175	337	17,5	10	1040x1702x440
HA33 E3	-	6,01	395	16	3	175	370	17,5	10	1040x1702x440
HA33 E4	-	7,01	395	16	3	175	399	17,5	10	1040x1702x440
HA70 E2	6,7	8,00	387	15	4	260	780	35	18	2310x1995x550
HA70 E3	-	9,50	387	15	4	260	840	35	18	2310x1995x550
HA70 E4	-	11,00	387	15	4	260	900	35	18	2310x1995x550
HA100 E1	9,00	7,60	395	17	4	260	900	60	20	2350x2300x590
HA100 E2	-	9,46	395	17	4	260	1000	60	20	2350x2300x590
HA100 E3	-	11,45	395	17	4	260	1080	60	20	2350x2300x590
HA100 E4	-	13,00	395	17	4	260	1145	60	20	2350x2300x590
HA110 E2	10,3	9,46	395	17	4	295	1000	60	20	2350x2300x590
HA110 E3	-	11,45	395	17	4	295	1080	60	20	2350x2300x590
HA110 E4	-	13,00	395	17	4	295	1145	60	20	2350x2300x590
HA160 E2	14,5	9,00	380	20	4	280	1360	100	30	2480x2380x700
HA160 E4	-	12,30	380	20	4	280	1580	100	30	2480x2380x850
HA160 E6	-	15,80	380	20	4	280	1740	100	30	2480x2380x880
HA180 E2	15,5	9,00	380	20	4	290	1380	100	30	2480x2380x700
HA180 E4	-	12,30	380	20	4	290	1600	100	30	2480x2380x850
HA180 E6	-	15,80	380	20	4	290	1760	100	30	2480x2380x880

E = Number of hydraulic extensions, - E3 = three extensions

GENERATION Radio Remote Control

Single hand proportional system

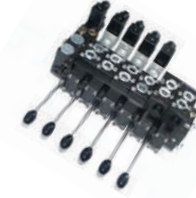
HA10
HA15
HA22
HA28
HA33
HA70



Pressure compensated inlet section: BOSCH

Multifunction radio control

HA100
HA110
HA160
HA180



Pressure compensated control valve: HAWE PSL2

NO CE Version

CAN-BUS
Only CE Version



TRUCK MOUNTED CRANES HA SERIES



STANDARD

- From HA10 to HA33**
- Load limiting device (CE) (NO HA10)
 - Hexagonal section extensions
 - Designed in accordance with: EN12999-DIN15018
 - Fatigue test classification: B3
 - Flanged valve (NO HA10)
 - Control panel with customizable position
 - ABS protective cover on controls
 - Worm and gear rotation
 - Fittings SAE-JIC
 - Sliding pads on telescopic extensions
 - Self-lubricating bushings
 - Independent telescopic cylinders
 - Light indicator for correct stabilizer stowing (CE)
 - Mechanical rotation limitation (CE) (NO HA10)
 - Swivel stabilizer foot
 - Proportional pressure transducer on main cylinder (CE) (NO HA10)
 - Sensor for correct stowing of the crane (CE) (NO HA10)
 - 90%-100% light visible from all around the crane (CE) (only with radio remote control) (NO HA10)

- From HA70 to HA180**
- Load limiting device (HA160-180) (1)
 - Hexagonal section extensions
 - Independent extension cylinders
 - Flanged valve
 - Designed in accordance with: EN12999-DIN15018
 - Fatigue test classification: B3
 - Manually opening stabilizers
 - Oil tank
 - Fittings SAE-JIC
 - Sliding pads on telescopic extensions
 - Self-lubricating bushings
 - Fixed stabilizer cylinders
 - Light indicator for correct stabilizer stowing (CE)
 - Mechanical rotation limitation (CE) (No with H2XL System or HRCS)
 - Dual controls (No with radio remote control)
 - Swivel stabilizer foot
 - Plastic cover on the control station (CE) (NO HA70)
 - Proportional inclination sensor on boom (CE)
 - Proportional pressure transducer on main cylinder (CE)
 - Sensor for correct stowing of the crane (CE)
 - 90%-100% light visible from all around the crane (CE or radio remote control) (2)

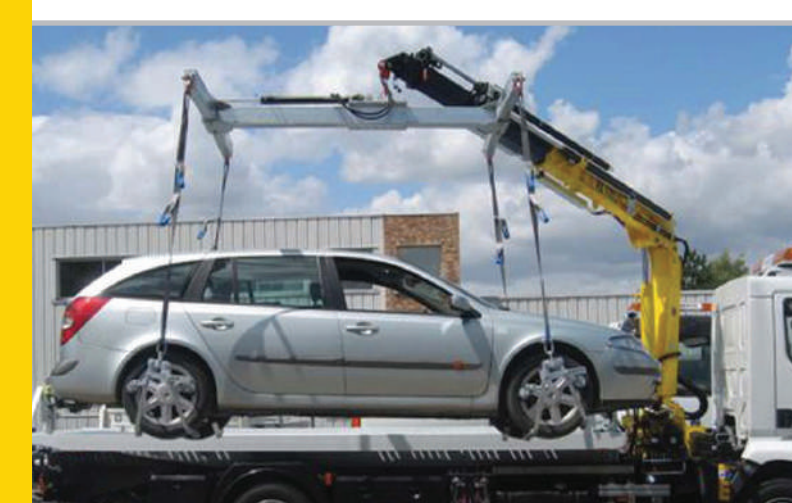
ACCESSORIES

- From HA10 to HA33**
- Radio remote control
 - Assembly kit
 - Oil tank
 - Supplementary element activation (NO HA10-15-33 E4)
 - Winch
 - Manual extensions
 - Electro-hydraulic powerpack
 - Extra cross beams
 - Tubular base for crane stabilizers (single or double)
 - Manually opening stabilizers
 - Manually opening and turning stabilizers
 - "Green" Oil

- From HA70 to HA180**
- Radio remote control
 - Supplementary elements activations
 - Winch
 - Assembly kit
 - Manual extensions
 - Hydraulic extensible stabilizers (HA100-110)
 - Manually extra extensible stabilizers (HA70)
 - Hydraulic extra extensible stabilizers (HA70-160-180)
 - Hydraulic super-extra wide stabilizers (HA160-180)
 - Turning stabilizers
 - Top seat
 - Operator Full Protection
 - Extra cross beams
 - Mechanical rotation limitation (No CE)
 - Oil cooler
 - "Green" Oil

(1) HA70 (CE only)
HA100-110 (CE or with radio remote control)
(2) HA70 (CE with radio remote control)

HYVA[®] CRANE HA SERIES



■ (08) 9459 6212 / 1800CRANES
■ 0436 307 679

■ www.ronco.com.au
■ hyva@ronco.com.au

■ 33 Valencia Way,
MADDINGTON WA 6109